

# CONTENTS

Fabric Tech	2
Uniform Printing Program	5
Colour Swatches	6
Size Charts	7
Shoes	13
Pointe	13
Ballet	19
Jazz	22
Tap	24
Character	25
Latin/Ballroom	27
Other	28
Leotards	31
Classic	31
Jazz	35
Lace	37
Mesh	39
Velvet	41
With Skirts	42
With Sleeves	43
Gymnastics	45
Unitards	46
Skirts	49
Tops	57
Crop Tops	57
Singlets	62
Casual	64
Jackets	67
Bottoms	71
Briefs/Shorts	71
Oakley Story	78
Madison Story	79
Lydia Story	80
Claudia Story	81
Dylan Story	82
Keira Story	83
Leggings/Pants	85
Mens' Wear	91
Warm Up	101
Underwear	107
Briefs	107
Bras	109
Body Stockings	110
Hosiery	113
Accessories	117
Bags	117
Shoe Accessories	126



### Energetiks is proud to create Products of Australia

Our commitment to making products of Australia is central to our identity and allows us to carefully oversee our processes and maintain the integrity of our corporate, social and environmental responsibilities.

At Energetiks we:

- Make 98% of our garments in Australia using Australian fabrics.
- Use an Australian garment manufacturer that upholds Australian standards of fair working conditions and wages.
- Use an Australian fabric mill that holds global environmental accreditation and follows strict guidelines for reducing impacts such as chemical waste and water use.
- Source organic, fairtrade cotton with pesticide-free processing.

The Product of Australian logo can only be used on products that meet strict criteria set out by the Federal Government.



### ProForm™

Our signature fabric brings you soft-touch comfort with all the benefits of sports performance technology. ProForm™ is long lasting and easy to care for so it stays looking it's best wash after wash. Moisture-wicking with a soft comfortable stretch, so you're free to move, breathe and dance.



Moisture management



Breathable



Easy care and colour fast



Superior soft-touch comfort



Strong and durable



Anti-pill

### ProForm™ Ultra

Our most comfortable, luxurious, breathable fabric, up to three times more durable than natural fibres. Moisture-wicking properties transport moisture from your skin to the fabric's surface, resulting in rapid evaporation to keep you cool and dry. ProForm Ultra™ utilises compression technology to increase blood flow and promote muscle recovery.



Compression technology



Breathable and moisture-wicking



Easy care and colour fast



Superior soft-touch comfort



Strong and durable



Anti-pill

### ProForm™ Lite

A lighter, softer version of our signature ProForm™, this fabric offers the sports performance, breathability and moisture-wicking technology.



Moisture management



Lightweight and breathable



Easy care and colour fast



Superior soft-touch comfort



Strong and durable



Anti-pill

### CottonLuxe

Soft and breathable, CottonLuxe™ is perfect for all-day wear. This high quality fabric has a high Lycra content blended with natural cotton for great shape retention.



Comfortable soft-touch



Fine fibres for superior quality



Easy care and colour fast



Breathable



Strong and durable

### 100% Australian Merino Wool

The perfect fibre for dance and life. Merino wool is a natural and renewable fibre that responds to your body to regulate your temperature throughout class. Warm when it's cold, cool when it's hot. Fine fibres for a super soft finish with a beautiful drape and crease resistance. Certified in accordance with the Responsible Wool Standard.



Fine fibres for a super soft finish



Beautiful drape and crease resistant



Anti-static



Warm when it's cold, cool when it's hot



Anti-odour



Anti-pill

**Modal**

This soft, supple fabric is made from natural beech tree fibres for a beautiful drape with all the benefits of a light, easy-care fabric.



Comfortable soft-touch



Breathable



Easy care and colour fast



Made from natural beech tree fibres



Beautiful drape

**Eco Breathe**

This eco-friendly, natural cotton blend is luxuriously soft and breathable, with added bamboo fibres so you stay warm in winter and cool in summer. With anti-allergy properties, this supple fabric is strong, durable, easy care and colour fast.



Moisture management



Breathable



Ultra soft silk-touch



Made from natural bamboo and organic cotton fibres



Naturally anti-bacterial to prevent odours



Beautiful drape and crease resistant

**Ultra Fleece**

This soft, breathable fleece utilises state-of-the-art fabric technology to lock in warmth and maintain breathability between double knit layers of cotton jersey. The ultimate in comfort, Ultra Fleece contours to your body and holds its shape for superior functionality and is made from 33% recycled polyester.



Warm



Breathable



Soft and comfortable double knit



Made from natural cotton



Contains 33% recycled polyester



Superior shape retention for longer wear



**Personalised uniforms, made easy.**

Be more than a stockist. Create communities by offering your schools the perfect uniform with personalised printing. Choose any of the high quality garments, bags and drink bottles from the entire Energetiks catalogue.



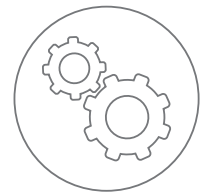
Offer your local studios a custom printed solution for their uniform needs.



Generate bulk sales from your local community.



Outfit entire studios in high quality, affordable uniforms with ease.



We take the hassle out of custom printing.

**Ordering is simple:**



1. Discuss printed uniform requirements with your local schools and studios.



3. We will email you a digital proof for approval.



2. Complete the order form and return it to Energetiks, along with the school's logo artwork file.



4. Turnaround times will be 4-6 weeks from artwork approval and payment of deposit.

Please email [production@energetiks.com.au](mailto:production@energetiks.com.au) to get started.



Indicates recommended uniform styles.

# COLOUR SWATCHES



AQUA

AQUA



AUB

AUBERGINE



BBL

BABY BLUE



BPK

BALLET PINK



BER

BERRY



BLK

BLACK



BUR

BURGUNDY



CDY

CANDY



CER

CERISE



CBT

COBALT



CFL

CORNFLOWER



DES

DIESEL



DGY

DARK GREY



DPK

DUSTY PINK



DPR

DEEP PURPLE



EBL

ELECTRIC BLUE



FLE

FLESH



FLM

FLURO LIME



FUS

FUCHSIA



GML

GREY MARLE



HPK

HOT PINK



INK

INK NAVY



JAC

JACARANDA



JAD

JADE



LIL

LILAC



LUN

LUNAR



MAG

MAGENTA



MAR

MARINE



MVE

MAUVE



MUL

MULBERRY



NVY

NAVY



ORG

ORANGE



PPK

PUNK PINK



PPR

PARTY PURPLE



PUR

PURPLE



RAS

RASPBERRY



RED

RED



SIL

SILVER



SKN

SKIN



SUN

SUNBURST



TAN

TAN



TEL

TEAL



TUR

TURQUOISE



YEL

YELLOW



VBG

VIBRANT GREEN



WHT

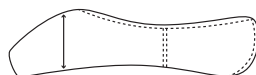
WHITE

## Pointe Shoe Size Chart

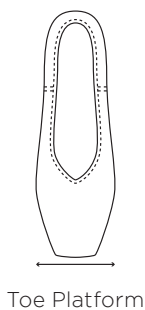
Street Size	3.5	4	4.5	5	5.5	6	6.5	7	7.5	8	8.5	9	9.5	10	10.5	11
<b>Freed</b>	1	1.5	2	2.5	3	3.5	4	4.5	5	5.5	6	6.5	7	7.5	8	
<b>Grishko</b>			2	2.5	3	3.5	4	4.5	5	5.5	6	6.5	7	7.5	8	8.5
<b>Energetiks</b>			33	34	34.5	35	36	37	37.5	38	39	40	41	42	43	44
<b>Length mm</b>			210	215	220	225	230	235	240	245	250	255	260	265	270	

## Pointe Shoe Model Selection Chart

The first step to finding the perfect fit is choosing a model that best mimics the foot shape. Use the chart to assist with this selection.



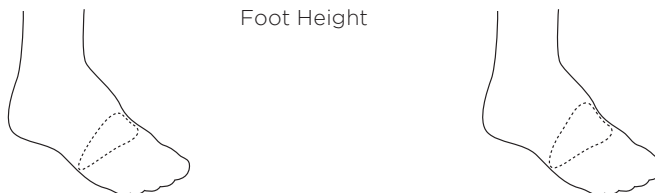
Crown Height



Toe Platform

	Low		High		
<b>Narrow</b>		Flexi-Pro Grishko 2007			<b>Tapered Foot</b> ↑
<b>Medium</b>	Energetiks Thea Grishko Miracle Energetiks Stella	Freed Studio Freed Studio Pro V Energetiks Athena Energetiks Emilia Polette Pro			
<b>Wide</b>		Triumph Freed Classic Range Freed Studio II Energetiks Lucelle	Energetiks Bella		
<b>Extra Wide</b>		Freed Classic Pro Freed Studio Pro R Energetiks Genevieve Energetiks Melody			
	<b>Shallow Foot</b>		<b>Full Foot</b>		<b>Wide Foot</b> ↓

Foot Height



**Energetiks Child's Shoe Size Chart**

Our shoe size charts are a guide only, they should be used as an aid and should not replace a personal fitting. Dance shoes should fit firm with very little growing room to ensure the foot is well supported . Our charts are reflective of a 'professional' fit (a tighter fit) and are here to give you a general idea on sizing. Order one full size up for growing room. Shoe sizes may vary due to shape and width of the foot.

UK (STRAIGHT)	SCHOOL SHOE	5	5-	6	6-	7	7-	8	8-	9	9-	10	10-	11	11-	12	12-	13	13-	1	1-
FOOT LENGTH	CM	13.4	13.8	14.2	14.6	15	15.4	15.6	16	16.4	16.8	17.2	17.6	18	18.4	18.8	19.2	19.6	20	20.4	20.8
STYLE CODE	STYLE																				
TSC01/6	Tap Flat					7	7-	8	8-	9	9-	10	10-	11	11-	12	12-	13	13-		
TSC05	Tap Lace Up											10	10-	11	11-	12	12-	13	13-	1	1-
JSC01	Jazz Full Sole						7	7-	8	8-	9	9-	10	10-	11	11-	12	12-	13	13-	
JSC02	Jazz Split Sole											10	10-	11	11-	12	12-	13	13-		
JSC03	Jazz Pull On											10	10-	11	11-	12	12-	13	13-		
JSC04/8/10	Jazz Boot							8	8-	9	9-	10	10-	11	11-	12	12-	13	13-		
BSC01/3/5/7	Ballet Full Sole	5	5-	6	6-	7	7-	8	8-	9	9-	10	10-	11	11-	12	12-	13	13-	1	1-
BSC02/4/8/9	Ballet Split Sole									9	9-	10	10-	11	11-	12	12-	13	13-	1	1-
BSC10 / 11	Ballet Split Sole					7	7-	8	8-	9	9-	10	10-	11	11-	12	12-	13	13-	1	1-
CSC05	Character Flat											10	10-	11	11-	12	12-	13	13-		
CSC06	Character Cuban																	13	13-		
CSB01	Character Lace Up											10	10-	11	11-	12	12-	13	13-	1	1-



## Energetiks Adult's Shoe Size Chart

Our shoe size charts are a guide only, they should be used as an aid and should not replace a personal fitting. Dance shoes should fit firm with very little growing room to ensure the foot is well supported. Our charts are reflective of a 'professional' fit (a tighter fit) and are here to give you a general idea on sizing. Order one full size up for growing room. Shoe sizes may vary due to shape and width of the foot. Energetiks is not responsible for incorrect measurements, or ordering the wrong size.

AU (FRACTIONAL)	STREET SIZE	4	4-	5	5-	6	6-	7	7-	8	8-	9	9-	10	10-	11	11-	12	12-	13	13-	14	14-		
Men's size US														9	9-	10	10-	11	11-	12	12-	13	13-	14	14.5
UK (STRAIGHT)	SCHOOL SHOE	1	1-	2	2-	3	3-	4	4-	5	5-	6	6-	7	7-	8									
FOOT LENGTH	CM	21	21.5	22	22.5	23	23.5	24	24.5	25	25.5	26	26.5	27	27.5	28	28.5	29	29.5	30	30.5	31	31.5	32	32.5
STYLE CODE	STYLE																								
TSA01/6	Tap Flat	4-	5	5-	6	6-	7	7-	8	8-	9	9-	10	10-	11	11-	12								
TSA02	Tap Cuban	4	4-	5	5-	6	6-	7	7-	8	8-	9	9-	10	10-	11	11-	12							
TSA05	Tap Lace Up	2	2-	3	3-	4	4-	5	5-	6	6-	7	7-	8	8-	9	9-	10	10-	11	11-	12			
JSA01	Jazz Full Sole	4	4-	5	5-	6	6-	7	7-	8	8-	9	9-	10	10-	11	11-	12							
JSA02	Jazz Split Sole	4	4-	5	5-	6	6-	7	7-	8	8-	9	9-	10	10-	11	11-	12							
JSA03	Jazz Pull On	4	4-	5	5-	6	6-	7	7-	8	8-	9	9-	10	10-	11	11-	12							
JSA04/8/10	Jazz Boot	4	4-	5	5-	6	6-	7	7-	8	8-	9	9-	10-	10-	11	11-	12	12-	13	13-	14			
JSM02	Jazz Mens'					6	6-	7	7-	8	8-	9	9-	10	10-	11	11-	12	12-	13	13-	14			
BSA01/3/5/7	Ballet Full Sole		2	2-	3	3-	4	4-	5	5-	6	6-	7	7-	8	8-	9	9-	10						
BSA02/4/8/9	Ballet Split Sole		2	2-	3	3-	4	4-	5	5-	6	6-	7	7-	8	8-	9	9-	10						
BSA10 / 11	Ballet Split Sole		2	2-	3	3-	4	4-	5	5-	6	6-	7	7-	8	8-	9	9-	10	10-	11	11-	12	12-	13
CSA02	Character Leather Cuban	4	4-	5	5-	6	6-	7	7-	8	8-	9	9-	10	10-	11	11-	12							
CSA03	Character Leather Sport Chorus	4	4-	5	5-	6	6-	7	7-	8	8-	9	9-	10	10-	11	11-	12							
CSA04	Leather Chorus			5	5-	6	6-	7	7-	8	8-	9	9-	10	10-	11	11-	12							
CSA05	Character Flat	4	4-	5	5-	6	6-	7	7-	8	8-	9													
CSA06	Character Cuban	4	4-	5	5-	6	6-	7	7-	8	8-	9	9-	10	10-	11	11-	12							
CSM01	Character Lace Up	2	2-	3	3-	4	4-	5	5-	6	6-	7	7-	8	8-	9									
DSA01L	Dance Sneakers	2	3	4	5	6	7	7	8	8	9	9	10												

## Women's Measurement Guide

**Bust:**

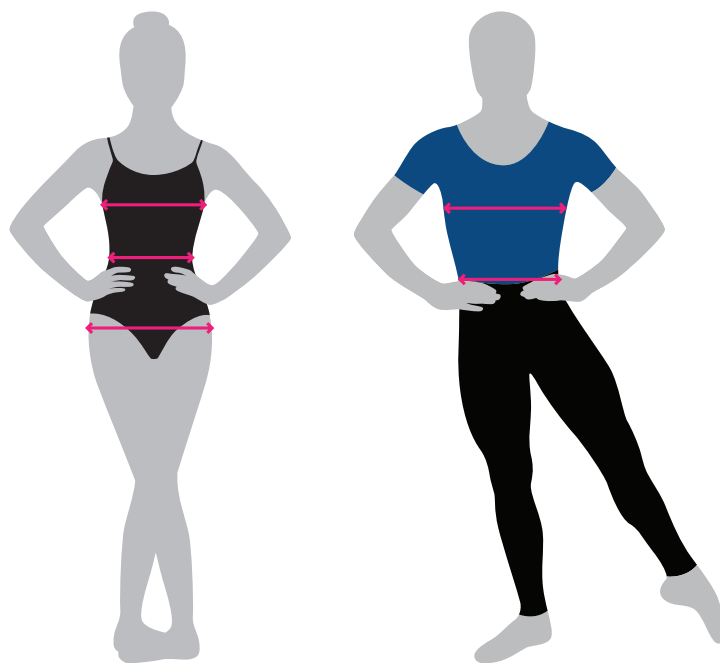
Measure around the fullest part of the bust

**Waist:**

Measure around the narrowest part of the waist

**Hips:**

Measure around the fullest part of the hips



## Men's Measurement Guide

**Chest:**

Measure around the broadest part of the chest

**Waist:**

Measure around the narrowest part of the waist

## Child Garment Size Chart

	Ch XXXsml	Ch XXsml	Ch Xsml	Ch Sml	Ch Med	Ch Lge	Ch Xlge	Ch XXlge
<b>Size (AUS)</b>	1-2	2-3	4-5	6-7	8-9	10-11	12-13	14-15
<b>Age (years)</b>	1	3	5	7	9	11	13	14
<b>Height (cm)</b>	85	95	115	125	135	145	155	160
<b>Chest (cm)</b>	49	54	59	64	69	74	79	84
<b>Waist (cm)</b>	51	53	56	58	61	63	66	68.5
<b>Hip (cm)</b>	54	59	64	69	74	79	83	87

## Youth Garment Size Chart

	Yth Med	Yth Lge	Yth Xlge
<b>Size (AUS)</b>	8-9	10-11	12-13
<b>Age (years)</b>	9	11	13
<b>Height (cm)</b>	135	145	155
<b>Chest (cm)</b>	69	74	79
<b>Waist (cm)</b>	61	63	66
<b>Hip (cm)</b>	74	79	83

### Women's Garment Size Chart

	Ad XXXsml	Ad XXsml	Ad Xsml	Ad Sml	Ad Med	Ad Lge	Ad Xlge	Ad XXLge	Ad XXXlge
<b>AUS/UK</b>	4	6	8	10	12	14	16	18	20
<b>USA</b>	00-0	0-2	2-4	4-6	6-8	8-10	10-12	12-14	14-16
<b>Europe</b>	32	34	36	38	40	42	44	46	48
<b>Bust (cm)</b>	74.5	77	83	88	93	98	103	108	113
<b>Waist (cm)</b>	55.5	58	65	70	75	80	85	90	95
<b>Hip (cm)</b>	80.5	83	93	98	103	108	113	118	123

### Men's Garment Size Chart

	Ad XXsml	Ad Xsml	Ad Sml	Ad Med	Ad Lge	Ad Xlge	Ad XXLge
<b>Chest (cm)</b>	78	84	90	96	102	108	114
<b>Waist (in)</b>	26"	28"	30"	32"	34"	36"	38"

### Energetiks Stella Pointe Shoe

- V cut, no drawstring for a sleek elegant appearance
- Pre-arched shank mimics the shape of the foot 'en pointe'
- Pleatless toe platform
- Medium vamp height
- Slim heel shape for the foot with taper from the metatarsal area
- Ergonomic design, providing ideal fit for moderately tapered toes
- Toe cushion
- Heel counter

#### Code: STELLA

Shank: FS (Flexible Soft)  
 Width: 2-5      Sizes: 33-43  
 Shank: FM (Flexible Medium)  
 Width: 1-5      Sizes: 33-44  
 Shank: FH (Flexible Hard)  
 Width: 2-5      Sizes: 35-43

PNK



### Energetiks Athena Pointe Shoe

- Elastic drawstring
- Slip free sole
- Sleek pleatless medium toe platform
- Medium vamp height
- Fuller heel shape for the foot with less taper from the metatarsal area to heel
- Ergonomic design, providing ideal fit for moderately tapered toes
- Toe cushion
- Heel counter

#### Code: ATHENA

Shank: FS (Flexible Soft)  
 Width: 1-5      Sizes: 33-44  
 Shank: FM (Flexible Medium)  
 Width: 2-5      Sizes: 33-43  
 Shank: FH (Flexible Hard)  
 Width: 2-5      Sizes: 36-43

PNK



### Energetiks Thea Pointe Shoe

- V cut, no drawstring for a sleek elegant appearance
- Slip free sole
- Pleatless toe platform
- Medium vamp height
- Broad metatarsal shape flatters a diamond shaped foot
- Ergonomic design, providing ideal fit for tapered toes
- Toe cushion
- Heel counter

#### Code: THEA

Shank: FM (Flexible Medium)  
 Width: 2-5      Sizes: 36-44  
 Shank: FH (Flexible Hard)  
 Width: 2-5      Sizes: 36-44

PNK



### Energetiks Emilia Pointe Shoe

- Elastic drawstring
- Pre-arched shank mimics the shape of the foot 'en pointe'
- Streamlined moderately tapered box with a medium platform suits many foot shapes
- Medium vamp height
- Ideal for beginners
- Toe cushion
- Heel counter

#### Code: EMILIA

Shank: FS (Flexible Soft)  
 Width: 1-5      Sizes: 33-44  
 Width: 1-6      Sizes: 36-44  
 Shank: FM (Flexible Medium)  
 Width: 2-5      Sizes: 33-44  
 Width: 1-6      Sizes: 36-44  
 Shank: FH (Flexible Hard)  
 Width: 2-6      Sizes: 36-43

PNK



**Energetiks Bella Pointe Shoe**

- Elastic drawstring
- Pre-arched shank mimics the shape of the foot 'en pointe'
- Wide box with a very stable platform
- Medium vamp height
- The box construction of this shoe suits dancers with high arched feet/ slightly full feet
- Toe cushion
- Heel counter

**Code: BELLA**

Shank: FS (Flexible Soft)  
 Width: 2-6      Sizes: 36-43  
 Shank: FM (Flexible Medium)  
 Width: 2-6      Sizes: 36-43  
 Shank: FH (Flexible Hard)  
 Width: 2-6      Sizes: 36-43

PNK



**Energetiks Melody Pointe Shoe**

- V cut, no drawstring for a sleek elegant appearance
- Slip free sole
- Pleatless toe platform
- Medium vamp height
- Broad toe platform for increased lateral support
- Toe cushion
- Heel counter

**Code: MELODY**

Shank: FM (Flexible Medium)  
 Width: 2-6      Sizes: 36-43

PNK



**Energetiks Lucelle Pointe Shoe**

- Elastic drawstring
- Pre-arched shank mimics the shape of the foot 'en pointe'
- Wide and very stable platform for superb balance
- Medium vamp height
- Fuller heel shape for the foot with less taper from metatarsal area to heel
- Toe cushion
- Heel counter

**Code: LUCELLE**

Shank: FS (Flexible Soft)  
 Width: 2-5      Sizes: 33-43  
 Width: 2-6      Sizes: 36-43  
 Shank: FM (Flexible Medium)  
 Width: 2-6      Sizes: 36-43  
 Shank: FH (Flexible Hard)  
 Width: 2-6      Sizes: 36-43

PNK



**Energetiks Genevieve Pointe Shoe**

- Elastic drawstring
- Additional space in the box allows for toe pads or wide/full feet
- Medium vamp height
- Offers superior comfort to dancers with wide toes, bunions and problem blister areas
- Wide platform for superb balance

**Code: GENEVIEVE**

Shank: MHF (Medium/Hard Flexible)  
 Width: 2-5      Sizes: 36-43

PNK



**Energetiks First Pointe**

- Demi-pointe shoe
- Elastic drawstring
- Medium vamp height
- Specifically designed for demi-pointe work
- Perfect transition from soft shoe to pointe shoes
- The resistance of the leather sole ensures that maximum strength is gained
- Not to be used 'en pointe'

**Code: FIRSTPOINTE**

Shank: SS (Super Soft)

Width: 1-5      Sizes: 33-43



**Grishko Flexi-Pro**

- Handmade shoe with machine stitched sole
- 3/4 length shank
- V cut vamp with drawstring
- New form alleviates pressure on metatarsals
- Lightweight shoe ideal for beginners
- Features a shock absorbing layer in the box

**Code: GRISHKOFLEXIPRO**

Shank: Standard  
 Width: 1X, 2X, 3X, 4X, 5X  
 Sizes: 2.5-7.5

PNK



**Grishko 2007**

- Handmade shoe with machine stitched sole
- 3/4 length shank
- V cut vamp with drawstring
- New form alleviates pressure on metatarsals
- Available in three strengths

**Code: GRISHKO2007**

Shank: Standard  
 Width: 1X, 2X, 3X, 4X, 5X  
 Sizes: 2.5-7.5

Shank: Medium  
 Width: 1X, 2X, 3X, 4X, 5X  
 Sizes: 2.5-8

Shank: Hard  
 Width: 1X, 2X, 3X, 4X, 5X  
 Sizes: 2.5-8.5

PNK



**Grishko Miracle**

- Nanotechnology for protection against bacterial infections
- Featherweight inner sole
- Special insert to absorb sound
- Cotton drawcord
- Soft lining
- Cushioned box

**Code: GRISHKOMIRACLE**

Shank: Light/Medium  
 Width: 2X, 3X, 4X, 5X  
 Sizes: 3-7.5

Shank: Light/Hard  
 Width: 2X, 3X, 4X, 5X  
 Sizes: 3-7.5

PNK



**Grishko Triumph**

- Double upper
- Non slip sole
- Lower heel than Grishko 2007
- Wide platform for optimal stability
- Roll through demi-pointe
- Allow up to 4-8 weeks for delivery

**Code: GRISHKOTRIUMPH**

Shank: Medium  
 Width: 2X, 3X, 4X, 5X  
 Sizes: 2-7.5

PNK



### Freed Classic

- Rapidly moulds to the foot
- Provides comfort and support with flexibility
- Originally developed for students of the Royal Ballet
- Minimal break in time
- Features wing block for support
- V Shaped vamp to help keep weight central
- Allow 4-8 weeks for delivery

**Code: FREEDCLASSIC**

Shank: Light  
Width: M, 1X, 2X, 3X  
Sizes: 1-7

Shank: Standard - 1.8mm  
Width: M, 1X, 2X, 3X  
Sizes: 1-7.5

Shank: Hard - 2.5mm  
Width: M, 1X, 2X, 3X  
Sizes: 3-7.5

PNK



### Freed Classic Pro

- Graduated insole to hug the contours of the arch
- Deep vamp with lower side to present the foot
- Elastic drawstring
- Matched to the physique and technique of today's dancers
- Allow 4-8 weeks for delivery

**Code: FREEDCLASSICPRO**

Shank: Standard - 1.8mm  
Width: M, 1X, 2X, 3X  
Sizes: 3-7.5

Shank: Hard - 2.5mm  
Width: 1X, 2X, 3X  
Sizes: 3-7.5

PNK



### Freed Studio

- Flat pleating for improved contact with the floor
- Deep, high vamp for maximum metatarsal support
- Smooth elegant lines

**Code: FREEDSTUDIO**

Shank: Standard - 1.8mm  
Width: C, D, E, EE  
Sizes: 2-8

Shank: Hard - 2.5mm  
Width: C, D, E, EE  
Sizes: 2-8

PNK



### Freed Studio II

- Smooth elegant lines
- Lower profile and deep vamp suits wider feet
- Broad flat box and platform offering optimal stability

**Code: FREEDSTUDIO2**

Shank: Standard - 1.8mm  
Width: C, D, E, EE  
Sizes: 2-8

Shank: Hard - 2.5mm  
Width: C, D, E, EE  
Sizes: 2-8

PNK





## Freed Studio Pro - V Cut

- 3/4 insole
- Tapered, extra quiet platform for tapered toes
- V cut vamp for a beautiful line
- Elastic drawstring
- Light 1.8mm insole
- Allow 4-8 weeks for delivery of Hard Shank

### Code: FREEDSTUDIOPRO-V

Shank: Standard  
Width: C, D, E, EE  
Sizes: 2-8  
Shank: Hard - 2.5mm  
Widths: C, D, E, EE  
Sizes: 2-8

PNK



## Freed Studio Pro - Round Cut

- 3/4 insole
- Elegant box shape with round cut vamp
- Wide, extra quiet platform for the fuller foot
- Elastic drawstring
- Allow 4-8 weeks for delivery of Hard Shank

### Code: FREEDSTUDIOPRO-R

Shank: Standard - 1.8mm  
Width: C, D, E, EE  
Sizes: 2-8  
Shank: Hard - 2.5mm  
Widths: C, D, E, EE  
Sizes: 2-8

PNK



## Freed Demi Pointe

- Leather sole
- Specifically designed for demi-pointe work
- Perfect transition from soft shoe to pointe shoes
- Not to be used 'en pointe'
- Allow 4-8 weeks for delivery

### Code: FREEDDEMI

Width: M, 1X, 2X, 3X  
Sizes: 2-7.5

PNK



**Ballet Shoe - Full Sole**

Premium Leather

- Supple, durable leather, with a cotton lining and stitched outer sole
- Enhanced aesthetic line
- Resistance to help develop strong feet
- Classic, full sole soft ballet shoe
- Bar tacked elastic drawstring

Code: BSC01 Child  
BSA01 Adult

Sizes: 6-1.5 Child  
2-10 Adult

Width: A, B, C, D

\* BLK & WHT available from size 8 (Child) onwards.  
\* Child 6 and 6.5 not available in width A.

**Ballet Shoe - Split Sole**

Premium Leather

- Supple, durable leather, with a cotton lining and stitched outer sole
- Enhanced aesthetic line
- Classic, split sole soft ballet shoe
- Bar tacked elastic drawstring

Code: BSC02 Child  
BSA02 Adult

Sizes: 9-1.5 Child  
2-10 Adult

Width: A, B, C, D

**Annabella - Full Sole Ballet Shoe**

Leather

- Supple leather for a comfortable feel
- Pre-attached elastic over instep
- Enhanced aesthetic line and elastic drawstring for a supportive fit
- Perfect for beginners or those new to dance
- Bar tacked elastic

Code: BSC03 Child  
BSA03 Adult

Sizes: 5-1.5 Child  
2-8 Adult

Width: A, B, C, D

\*Child sizes 5-6.5 not available in width A

**Ballet Shoe - Canvas Split Sole**

Canvas

- Flexible, durable canvas, with a stitched outer sole
- Enhanced aesthetic line
- Streamlined, split sole flexible ballet shoe
- Bar tacked elastic drawstring

Code: BSC04 Child  
BSA04 Adult

Sizes: 10-1.5 Child  
2-8 Adult

Width: A, B, C, D



NEW

**Harper - Full Sole Ballet Shoe**

Premium Leather

- Constructed using super soft, premium leather that moulds instantly to your foot
- Pre-attached elastic over instep
- Superior slimline design with elastic binding for an ultra-sleek look
- Fullsole construction offers support to growing feet
- Available in four widths to accommodate a range of foot shapes

Code: BSC05 Child  
BSA05 Adult  
Sizes: 7-1.5 Child  
2-7.5 Adult  
Width: A, B, C, D

PNK TPK



\* Available March

**Révélation Ballet Shoe - Full Sole**

Super Premium Leather

- Soft, durable full grain leather, with stretchable cotton lining
- Superior slimline design creates the ultimate arch
- Streamlined, low profile cut and refined drawstring casing
- Ultra sleek, full sole soft ballet shoe
- Bar tacked elastic drawstring

Code: BSC07 Child  
BSA07 Adult  
Sizes: 7-1.5 Child  
2-10 Adult  
Width: A, B, C, D

PNK



**Révélation Ballet Shoe - Split Sole**

Super Premium Leather

- Soft, durable full grain leather, with stretchable cotton lining
- Superior slimline design and triangle shaped insert creates the ultimate arch
- Cross elastic for extra support
- Streamlined, low profile cut and refined drawstring casing
- Ultra sleek, split sole soft ballet shoe
- Bar tacked elastic drawstring

Code: BSC08 Child  
BSA08 Adult  
Sizes: 9-1.5 Child  
2-10 Adult  
Width: A, B, C, D

PNK



**Révélation Ballet Shoe - Mesh Split Sole**

Super Premium Leather

- Soft, durable full grain leather, with stretchable cotton lining
- Superior slimline design and triangle shaped mesh insert creates the ultimate arch
- Cross elastic for extra support
- Streamlined, low profile cut and refined drawstring casing
- Ultra sleek, split sole soft ballet shoe
- Bar tacked elastic drawstring

Code: BSC09 Child  
BSA09 Adult  
Sizes: 9-1.5 Child  
2-10 Adult  
Width: A, B, C, D

PNK



**Révélation Ballet Shoe - Tech Fit™**

Stretch Canvas

- Breathable and durable stretch canvas for the perfect fit
- Superior slimline design and triangle shaped insert creates the ultimate arch
- Cross elastic for extra support
- Low profile with elastic binding for an ultra-sleek look

Code: BSC10 Child  
BSA10 Adult

Sizes: 9-1.5 Child  
2-10 Adult  
10.5-13 Adult (BLK only)

Width: Standard, Wide

**Révélation Ballet Shoe - Pro Fit**

Super Premium Leather

- Super soft premium leather moulds to your foot for complete freedom of movement
- Pre-attached crossed elastic over instep
- Superior slimline design and triangle shaped insert creates the ultimate arch
- Low profile with elastic binding for an ultra-sleek look

Code: BSC11 Child  
BSA11 Adult

Sizes: 7-1.5 Child  
2-10 Adult

Width: A, B, C, D

**Pivot 360™**

Premium Leather

- Supple leather, with cotton lining
- Rounded toe shape and suede turning soles
- Silicone on the inside heel elastic for superior grip

Code: BSP01  
BSP01W (Wide)

Sizes:  
Child - XXS: 10-11  
XS: 12-13  
S: 1-2

Adult - M: 5-6  
L: 7-8  
XL: 9-10

Width: Standard, Wide

**Pivot 360™ Tech Fit™**

Stretch Canvas

- Breathable stretch canvas moulds instantly to the foot
- Suede turning soles
- Silicone on the inside heel elastic for superior grip

Code: BSP03

Sizes:  
Child - XXS: 10-11  
XS: 12-13  
S: 1-2

Adult - M: 5-6  
L: 7-8  
XL: 9-10

Width: Standard



# SHOES

## Warm Up Cozies

Polyester

- Lightweight polyester, with adjustable drawstrings
- Durable, non-slip outer-sole
- Soft and comfortable inner sole

Code: WCC02 Child  
WCA02 Adult

Sizes:  
Child - Sml: 9-11  
Med: 11-13  
Lge: 13-2

Adult - Sml: 4-6  
Med: 6-8  
Lge: 8-10  
Xlge: 10-12



\* Available until sold out



## Jazz Shoe - Full Sole

Premium Leather

- Premium leather, with a breathable cotton lining
- Designed for support under the arch
- Full sole, lace up soft jazz shoe

Code: JSC01 Child  
JSA01 Adult

Sizes: 7-13.5 Child  
4-12 Adult

Width: Standard



## Jazz Shoe - Split Sole

Premium Leather

- Premium leather, with a breathable cotton lining
- Designed to enhance the line under the arch
- Split sole, lace up soft jazz shoe

Code: JSC02 Child  
JSA02 Adult  
JSM02 Men

Sizes: 10-13.5 Child  
4-12 Adult  
6-14 Men (BLK only)

Width: Standard



## Jazz Shoe - Pull On Split Sole

Premium Leather

- Premium leather, with elastic insert and breathable cotton lining
- Newly designed last and enhanced line under the arch
- Split sole, pull on soft jazz shoe, with a sleek low profile

Code: JSC03 Child  
JSA03 Adult

Sizes: 10-13.5 Child  
4-12 Adult

Width: Narrow



**Jazz Boot - Slip on Split Sole**

Premium Leather

- Premium leather, with elastic inserts and breathable cotton lining
- Newly designed last and enhanced line under the arch
- Split sole, pull on soft jazz boot

Code: JSC04 Child  
JSA04 Adult

Sizes: 11-13.5 Child  
4-12 Adult

Width: Standard

**Jazz Boot - Neoprene**

Premium Leather

- Premium leather, with a neoprene stretch arch insert
- Newly designed last and enhanced line under the arch
- EVA outer sole and heel, with a sleek, low profile
- Split sole, pull on soft jazz boot
- Shock absorbing and impact protection insoles

Code: JSC08 Child  
JSA08 Adult

Sizes: 8-13.5 Child  
4-15 Adult

Width: Standard

**Révélation Jazz Boot - Mesh Split Sole**

Super Premium Leather

- Soft, durable full grain leather, with stretch cotton lining
- Superior slimline design with mesh insert creates the ultimate arch
- Streamlined, low profile cut

Code: JSC10 Child  
JSA10 Adult

Sizes: 8-13.5 Child  
4-14 Adult

Width: Standard

**Acro Boot - Neoprene**

Premium Leather

- Designed to perfectly suit the needs of the modern dancer
- Oval outer sole pads made from superior textured rubber for advanced grip
- Comfortable and breathable cotton lining
- Shock absorbing and impact protection insoles

Code: ASC01 Child  
ASA01 Adult

Sizes: 10-13.5 Child  
4-12 Adult

Width: Standard



**Dance Sneaker Leather**

Premium Leather/Mesh Upper

- Premium leather, with a hard-wearing TPU sole
- Heel support system to help avoid rolling
- Sleek dance sneaker, with tie up laces for a closer fit

Code: DSA01L Adult  
 Sizes: 1-10 Adult (full sizes only)  
 Width: Standard

BLK



**Tap Shoe - Low Heel**

Premium Leather

- Gradually changing over to new buckle
- Premium leather, with a breathable cotton lining
- Full leather outer sole, reinforced strap and padded insole
- Strong heel counter for added stability
- Professional Pro-Tone tap plates and sound resonating boards
- Non-slip pads included
- Shock absorbing and impact protection insoles

Code: TSC01 Child  
 TSA01 Adult  
 Sizes: 8-13.5 Child  
 4-12 Adult  
 Width: Standard

BLK TAN



**Tap Shoe - Cuban Heel**

Premium Leather

- Premium leather, with a breathable cotton lining and a 1" heel
- Full leather outer sole, reinforced strap and padded insole
- Strong heel counter for added stability
- Professional Pro-Tone tap plates and sound resonating boards
- Non-slip pads included
- Shock absorbing and impact protection insoles

Code: TSA02 Adult  
 Sizes: 4-12 Adult  
 Width: Standard

BLK TAN



**Tap Shoe - Lace Up**

Premium Leather

- Premium leather, with a breathable cotton lining
- Strong toe and heel counter for added stability
- Professional Pro-Tone tap plates and sound resonating boards
- Non-slip pads included
- Shock absorbing and impact protection insoles

Code: TSC05 Child  
 TSA05 Adult  
 Sizes: 10-13.5 Child  
 1-12 Adult  
 Width: Standard

BLK



**Debut Tap Shoe - Low Heel**

PVC Upper/Rubber Sole

- PVC upper, with a breathable cotton lining
- Reinforced strap and padded insole
- Flexible heel counter for added stability
- Professional Pro-Tone tap plates and sound resonating boards
- Non-slip pads included
- Gradually changing to new buckle
- Shock absorbing and impact protection insoles
- Vegan

Code: TSC06 Child  
TSA06 Adult

Sizes: 7-13.5 Child  
4-10 Adult

Width: Standard

**Tap Boot - Slip on Neoprene**

Premium Leather

- Strong toe and heel counter for added stability
- Professional Pro-Tone tap plates and sound resonating boards
- Ultra flexible neoprene split sole for greater range of movement
- No laces or buckles for quick changes
- Shock absorbing and impact protection insoles

Code: TSC08 Child  
TSA08 Adult

Sizes: 10-13.5 Child  
4-12 Adult

Width: Standard

**Character Shoe - Cuban Heel**

Premium Leather

- Premium leather, with a breathable cotton lining and a 1" heel
- Full leather outer sole and a reinforced strap
- Flexible heel counter for added stability
- Shock absorbing and impact protection insoles

Code: CSA02 Adult

Sizes: 4-12 Adult

Width: Standard

**Character Shoe - Sports/Chorus Heel**

Premium Leather

- Premium leather, with a breathable cotton lining and a 1.5" heel
- Full leather outer sole and a reinforced strap
- Strong heel counter for added stability
- Shock absorbing and impact protection insoles

Code: CSA03 Adult

Sizes: 4-12 Adult

Width: Standard





## Character Shoe - Chorus Heel

Premium Leather

- Premium leather, with a breathable cotton lining and a 2.5" heel
- Full leather outer sole and a reinforced strap
- Strong heel counter for added stability
- Shock absorbing and impact protection insoles

Code: CSA04 Adult  
Sizes: 5-12 Adult  
Width: Standard



## Canvas Character Shoe - Low Heel

Canvas

- Soft, durable canvas upper, with a suede sole
- Low, non-marking, matte plastic heel
- Flexible heel counter and elastic over instep for increased stability
- Shock absorbing and impact protection insoles

Code: CSC05 Child  
CSA05 Adult  
Sizes: 10-13.5 Child  
4-9 Adult  
Width: Standard



## Canvas Character Shoe - Cuban Heel

Canvas

- Soft, durable canvas upper, with a suede sole
- Non-marking, matte plastic 1" heel
- Flexible heel counter and elastic over instep for increased stability
- Shock absorbing and impact protection insoles

Code: CSC06 Child  
CSA06 Adult  
Sizes: 13-13.5 Child  
4-12 Adult  
Width: Standard



## Men's Canvas Character Shoe

Canvas

- Soft, durable canvas upper, with a suede sole
- Low, non-marking, matte plastic heel
- Strong heel counter and tie up laces for added stability
- Shock absorbing and impact protection insoles

Code: CSB01 Child  
CSM01 Adult  
Sizes: 10-13.5 Child  
1-9 Adult  
Width: Standard



**Freed Tina**

Satin

- 2.5" slim flare heel
- T bar strap
- Diamonte trim
- 5 strip vamp

Code: FTINA  
 Sizes: UK 3-8  
 Width: Standard

FLE

**Freed Marina**

Glitter PU

- 1" heel
- T bar strap
- Glitter detail

Code: FMARINA  
 Sizes: UK 11-2 Child  
 Width: Standard

SIL

**Freed Holly**

Satin

- 2.5-3" slim flared heel
- T bar strap
- Diamonte trim

Code: FHOLLY  
 Sizes: UK 3-8  
 Width: Standard  
 Heel: 2.5", 3"

BLK

DARK  
TAN**Freed Sophia**

Satin

- Cross straps
- Diamonte centre piece
- 5 strip vamp

Code: FSOPH  
 Sizes: UK 3-8  
 Width: Standard  
 Heel: 2", 2.5", 3"

BLK

DARK  
TAN

FLE



\* 2" heel not available in FLE.

## Freed Men's Modern PU

Patent Synthetic Upper/Leather Sole

---

- 1" graduated heel
- Lace up
- Oxford style

Code: FMPB  
Sizes: UK 7-12  
Width: Standard

BLK



## Freed Men's Modern Leather

Leather

---

- 1" graduated heel
- Lace up
- Oxford style

Code: FMLB  
Sizes: UK 7-12  
Width: Standard

BLK



## Freed Teacher's Shoe

Premium Leather

---

- Supple, durable leather
- Cotton lining
- Flexible suede outer sole
- Enhanced line
- Strong heel counter
- Suede insole and heel lining
- 1" heel
- Cross elastic straps

Code: FTEACH  
Sizes: UK 3-8  
Width: Standard

BLK

PNK



**Emery Leotard**

ProForm™

Simple, elegant and classic with a high back and flattering scoop neck.



**CL01**

ChXXsml, ChXsml, ChSml, ChMed, ChLge, ChXlge



**AL01**

AdXsml, AdSml, AdMed, AdLge



**AL01**

AdXlge



**Charlotte Leotard**

ProForm™

A delicate gathered front for a classic ballet look with broad straps for comfortable, all-day support.



**CL04**

ChXXXsml\*, ChXXsml, ChXsml, ChSml, ChMed, ChLge, ChXlge



**AL04**

AdXsml, AdSml, AdMed, AdLge



**AL04**

AdXlge, AdXXlge\*, AdXXXlge^



**Charlotte Lycra Leotard**

Nylon Lycra™

A delicate gathered front for a classic ballet look with broad straps for comfortable, all-day support.

**CL04L**

ChXsml, ChSml, ChMed, ChLge, ChXlge



**AL04L**

AdXsml, AdSml, AdMed, AdLge



**AL04L**

AdXlge



**Charlotte Debut Leotard**

ProForm Lite™

A delicate gathered front for a classic ballet look with broad straps for comfort.



**DCLO4**

ChXXsml, ChXsml, ChSml, ChMed, ChLge, ChXlge, ChXXlge



**Selina Leotard**

ProForm™

A simple gathered front and a stunning low back. Front lining offers you coverage.

**CL06**

ChXsml, ChSml, ChMed, ChLge, ChXIge



**AL06**

AdXsml, AdSml, AdMed, AdLge



**Devon Leotard**

ProForm™

Broad straps provide comfortable support. Princess cut enhances and flatters your lines.

**CL69**

ChXsml, ChSml, ChMed, ChLge, ChXIge



**AL69**

AdXsml, AdSml, AdMed, AdLge



**AL69**

AdXIge



**Penelope Leotard**

ProForm™

Broad straps offer all-day comfort and support. Gathered front and no design lines for a clean, minimalist aesthetic.

**CL76**

ChXXsml, ChXsml, ChSml, ChMed, ChLge, ChXIge



**AL76**

AdXsml, AdSml, AdMed, AdLge



**AL76**

AdXIge



**Cleo Camisole**

ProForm™

Broad straps and front lining for maximum comfort. Princess cut with panel detailing flatters your lines.

**CL48**

ChSml, ChMed, ChLge, ChXIge



**AL48**

AdXsml, AdSml, AdMed, AdLge



**AL48**

AdXIge



**Annabelle Camisole**

ProForm™

Broad straps provide comfortable support with a princess cut to enhance and flatter your lines.



**CL11**

ChXsml, ChSml, ChMed, ChLge, ChXlge



**AL11**

AdXsml, AdSml, AdMed, AdLge



**AL11**

AdXlge, AdXXlge, AdXXXlge

See website for full colour selection



**Iris Camisole**

ProForm™

Fine straps highlight the décolletage with freedom to move. Princess cut to enhance and flatter your lines.



**CL74**

ChXsml, ChSml, ChMed, ChLge, ChXlge



**AL74**

AdXsml, AdSml, AdMed, AdLge



**Ophelia Camisole**

ProForm™

Fine straps highlight the décolletage with a princess cut and scooped back to enhance and flatter your lines.



**CL09**

ChXsml, ChSml, ChMed, ChLge, ChXlge



**AL09**

AdXsml, AdSml, AdMed, AdLge



**AL09**

AdXlge, AdXXlge\*



**Natalia Camisole**

ProForm™

Delicate straps and a pretty gathered front for a classic look. Princess line cut and sculpted panelling flatter your lines.



**CL63**

ChSml, ChMed, ChLge, ChXlge



**AL63**

AdXsml, AdSml, AdMed, AdLge



**Harmony Camisole**

ProForm™

A clean, minimalist aesthetic with a gathered front and gently scooped back. Suitable for RAD repertoire.



**AL10**

AdXsml, AdSml, AdMed, AdLge



**Freya Camisole**

ProForm™

Fine straps highlight the décolletage with freedom to move. Front lining offers you coverage.



**CL12**

ChXsml, ChSml, ChMed, ChLge, ChXlge



**AL12**

AdXsml, AdSml, AdMed, AdLge



**AL12**

AdXlge



**Alexandra Camisole**

ProForm™

Sweetheart neckline and delicate straps highlight the décolletage. Gathered front and back with overlay binding adds unique detail.



**CL67**

ChMed, ChLge, ChXlge



**AL67**

AdXsml, AdSml, AdMed, AdLge



**Katherine Camisole**

ProForm™

Fine straps with front and back V neckline and a princess cut to enhance and flatter your lines.



**CL75**

ChXsml, ChSml, ChMed, ChLge, ChXlge



**AL75**

AdXsml, AdSml, AdMed, AdLge



**Caroline Camisole**  
ProForm™

Delicate straps at the front give way to unique crossed strapwork at the back. Flattering low cut back subtly draws the eye.

**CL14**

ChSml, ChMed,  
ChLge, ChXlge



**AL14**

AdXsml, AdSml,  
AdMed, AdLge



**AL14**

AdXlge



**Karli Camisole**  
ProForm™

Intricate criss-cross strapwork at the back to express your playful side. Simple and flattering scoop neck at the front.

**CL13**

ChSml, ChMed,  
ChLge, ChXlge



**AL13**

AdXsml, AdSml,  
AdMed, AdLge



**AL13**

AdXlge



**Tiffany Leotard**  
ProForm™

Double crossed strapwork adds a modern edge to your look. The perfect V neck flatters every dancer.

**CL16**

ChXsml, ChSml, ChMed,  
ChLge, ChXlge



**AL16**

AdXsml, AdSml,  
AdMed, AdLge



**AL16**

AdXlge



**Tiffany Contrast Leotard**  
ProForm™

V neck in contrast binding is flattering and modern. Double crossed strapwork at the back adds fresh, stylish detail.

**CL33**

ChXsml, ChSml, ChMed,  
ChLge, ChXlge



**AL33**

AdXsml, AdSml,  
AdMed, AdLge



**AL33**

AdXlge





**Eloise Ribbed Camisole**

ProForm™/Rib

Detailed back with unique crossed strapwork. Ribbed panelling adds texture for a contemporary look.

**CL18**

ChSml, ChMed, ChLge, ChXlge



**AL18**

AdXsml, AdSml, AdMed, AdLge



**AL18**

AdXlge



**Jenna Camisole**

ProForm™

Simple scoop neck and delicate straps for a clean, modern look. Wrapped back strapwork is flattering and unique.

**CL41**

ChSml, ChMed, ChLge, ChXlge



**AL41**

AdXsml, AdSml, AdMed, AdLge



**Samantha Leotard**

ProForm™/Rib

Ribbed panelling adds texture for a contemporary look.

**CL15**

ChSml, ChMed, ChLge, ChXlge



**AL15**

AdXsml, AdSml, AdMed, AdLge



**AL15**

AdXlge



**Joni Leotard**

ProForm™

Innovative panels at the front and back in vibrant colour. Flattering design lines and a keyhole back.

**CL19**

ChXsml, ChSml, ChMed, ChLge, ChXlge



**AL19**

AdXsml, AdSml, AdMed, AdLge



**AL19**

AdXlge



**Viola Lace Camisole**

ProForm™/Stretch Lace

Upper front lace detail with a simple V shape to flatter the back.

**CL71**ChSml, ChMed,  
ChLge, ChXlge**AL71**AdXsml, AdSml,  
AdMed, AdLge**Grace Lace Camisole**

ProForm™/Stretch Lace

Elegant V shape lace panels add detail to the front and back. Princess cut with panel detailing flatters your lines.

**CL105**ChSml, ChMed,  
ChLge, ChXlge**AL105**AdXsml, AdSml,  
AdMed, AdLge**Layla Lace Camisole**

ProForm™/Stretch Lace

V shape lace panels add modern structure to the front and back. Princess cut with panel detailing flatters your lines.

**CL106**

ChMed, ChLge, ChXlge

**AL106**AdXsml, AdSml,  
AdMed, AdLge**Alice Lace Leotard**

ProForm™/Stretch Lace

Fine straps with hourglass lace cutaways to flatter your lines.

**CL70**

ChMed, ChLge, ChXlge

**AL70**AdXsml, AdSml,  
AdMed, AdLge

**Karen Lace Camisole**

ProForm™/Stretch Lace

Elegant lace panelling with double strap design. Front lining offers extra support and coverage while you move.

**CL21**

ChSml, ChMed, ChLge, ChXlge



**AL21**

AdXsml, AdSml, AdMed, AdLge



**Isabelle Lace Leotard**

ProForm™/Stretch Lace

Features a high neck line with lace overlay panels and teardrop back.

**CL108**

ChMed, ChLge, ChXlge



**AL108**

AdXsml, AdSml, AdMed, AdLge



**Hannah Lace Leotard**

ProForm™/Stretch Lace

Elegant illusion neckline offers coverage. Features striking V back lace detailing. Front lining offers extra support while you move.

**CL88**

ChSml, ChMed, ChLge, ChXlge



**AL88**

AdXsml, AdSml, AdMed, AdLge



**Scarlett Lace Leotard**

ProForm™/Stretch Lace

On-trend high neck offers coverage and sleek style. Elegant lace panelling wraps around to a dramatic and eye-catching open back.

**CL119**

ChMed, ChLge, ChXlge



**AL119**

AdXsml, AdSml, AdMed, AdLge



**Mila Lace Leotard**

ProForm™/Stretch Lace

Elegant lace cap sleeves for the perfect trans-seasonal garment. Teardrop cut out back enhances your silhouette.

**CL110**ChSml, ChMed,  
ChLge, ChXlge**AL110**AdXsml, AdSml,  
AdMed, AdLge**Allison Lace Leotard**

ProForm™/Stretch Lace

Raglan cap sleeves in delicate lace, high cut neck and back offers coverage with a key hole cut out detail.

**CL118**

ChMed, ChLge, ChXlge

**AL118**AdXsml, AdSml,  
AdMed, AdLge**Hailey Lace Leotard**

ProForm™/Stretch Lace

Long lace sleeves extend your classical arm lines. Teardrop cut out back enhances your silhouette.

**CL113**

ChMed, ChLge, ChXlge

**AL113**AdXsml, AdSml,  
AdMed, AdLge**Maya Mesh Leotard**

ProForm™ Ultra/Mesh

Elegant illusion neckline and teardrop cut out back adds unique details.

**AL124M1**AdXXsml, AdXsml, AdSml,  
AdMed, AdLge

**Alice Mesh Leotard**

ProForm™ Ultra/Tech Mesh

Fine straps highlight the décolletage, a sleek Tech Mesh panel at the back wraps around to flattering curved cutaways.

**AL70M4**

AdXXsml, AdXsml, AdSml, AdMed, AdLge



**Stellar Mesh Leotard**

ProForm™ Ultra/Tech Mesh

Features a high neck line cut away at the shoulders for a contemporary aesthetic, with sleek Tech Mesh detailing.

**AL115M2**

AdXXsml, AdXsml, AdSml, AdMed, AdLge



**Lexi Mesh Leotard**

ProForm™ Ultra/Tech Mesh

Contemporary Tech Mesh panels at the neck and waist. A completely sheer back offers coverage without sacrificing style.

**AL122M1**

AdXXsml, AdXsml, AdSml, AdMed, AdLge



**Sienna Mesh Leotard**

ProForm™ Ultra/Tech Mesh

A sheer back features an elegant teardrop cut-out. On-trend high neck offers coverage and sleek style.

**AL123M1**

AdXXsml, AdXsml, AdSml, AdMed, AdLge



**Eloise Velvet Camisole**  
ProForm™/Tie Dye Velvet

Unique tie-dye velvet panelling means no two leotards are the same. Criss-cross strapwork at the back makes a playful statement.

**CL20**

ChSml, ChMed,  
ChLge, ChXlge



**AL20**

AdXsml, AdSml,  
AdMed, AdLge



**AL20**

AdXlge



**Giselle Camisole**  
ProForm™/Velvet

Soft, luxe velvet panelling for a timeless classical look with a delicate gathered front and back.

**CL17**

ChSml, ChMed,  
ChLge, ChXlge



**AL17**

AdXsml, AdSml,  
AdMed, AdLge



**AL17**

AdXlge

See website for full colour selection



**Cassie Velvet leotard**  
ProForm™/Velvet

Rich velvet panelling for a timeless classical look. Sophisticated detailed triangle back with butterfly clip closure.

**CL28**

ChSml, ChMed,  
ChLge, ChXlge



**AL28**

AdXsml, AdSml,  
AdMed, AdLge



NEW



**Alda Velvet Leotard**  
ProForm™/Velvet

Panelled in luxe velvet for a modern look you will adore. Elegant scoop back for a classic fit.

**CL42**

ChSml, ChMed,  
ChLge, ChXlge



**AL42**

AdXsml, AdSml,  
AdMed, AdLge



NEW



**Viola Velvet Camisole**

ProForm™/Diamonte Velvet

Opulent and sophisticated with velvet panelling and sparkling glitter detail. Fine straps highlight the décolletage with freedom to move.

**CL49**

ChSml, ChMed, ChLge, ChXIge



**AL49**

AdXsml, AdSml, AdMed, AdLge



**AL49**

AdXIge



**Gracie Leotard with Skirt**

ProForm™/Crystal

Simple camisole cut lets the crystal detail shine. Shimmering Crystal frill detail at the neckline is pretty and playful.

**CL57**

ChXXsml, ChXsml, ChSml, ChMed, ChLge, ChXIge



**Lucia Camisole with Skirt**

ProForm™/Stretch Chiffon

Pretty gathered front and back, with attached skirt for a classic dance look in class or performance.

**CL61**

ChXsml, ChSml, ChMed, ChLge, ChXIge



**Florence Leotard with Skirt**

ProForm™/Stretch Chiffon

Simple cap sleeves with pretty gathered front and attached skirt provides a classic dance look in class or performance.

**CL07**

ChXXsml, ChXsml, ChSml, ChMed, ChLge, ChXIge



**Jesse Leotard**

ProForm™

High back and flattering scoop neck offers superior coverage. Short sleeves for versatility.

**CL02**ChXXsml, ChXsml, ChSml,  
ChMed, ChLge, ChXIge**AL02**AdXsml, AdSml,  
AdMed, AdLge**AL02**AdXIge  
AdXXIge\***Jesse Debut Leotard**

ProForm Lite™

High back and flattering scoop neck offers superior coverage. Short sleeves for versatility.

**DCLO2**ChXXsml, ChXsml, ChSml,  
ChMed, ChLge, ChXIge, ChXXIge**Eleanor Leotard**

ProForm™/Crystal

Delicate gathered front with shimmering crystal puff sleeves for an update on a traditional design.

**CL58**ChXXsml, ChXsml, ChSml,  
ChMed, ChLge, ChXIge**Heidi Leotard**

ProForm™

A clean, simple aesthetic. Delicate gathered front for a classic ballet look. Dainty cap sleeves for versatility in any season.

**CL78**ChXXsml, ChXsml, ChSml,  
ChMed, ChLge, ChXIge



**Pippa Leotard**

ProForm™

Cap sleeves with upper panel detailing for a clean sophisticated look. Full front lining for coverage.

**AL53**

AdXsml, AdSml, AdMed, AdLge



**AL53**

AdXlge



**Jesse Long Sleeve Leotard**

ProForm™

High back and flattering scoop neck offer superior coverage. Long sleeve style for added warmth.



**CL03**

ChXsml, ChSml, ChMed, ChLge, ChXlge



**AL03**

AdXsml, AdSml, AdMed, AdLge



**AL03**

AdXlge



**Elizabeth Leotard**

ProForm™

Gathered front feature adds classical detail. Long sleeve style for added warmth.



**CL05**

ChXsml, ChSml, ChMed, ChLge, ChXlge



**AL05**

AdXsml, AdSml, AdMed, AdLge



**AL05**

AdXlge, AdXXlge



**Mara Leotard**

ProForm™

Sophisticated 3/4 length sleeves offer trans-seasonal coverage. A gathered back creates a unique arch-shaped cut out.



**CL08**

ChSml, ChMed, ChLge, ChXlge



**AL08**

AdXsml, AdSml, AdMed, AdLge



**AL08**

AdXlge, AdXXlge



**Meg Leotard**

ProForm™/Metallic

Features a flattering boat neck. Upper panel in glittering Showcase fabric adds fun and texture to your look.

**SCL120**

ChXsml, ChSml, ChMed, ChLge, ChXlge, ChXXlge

**Star Leotard**

ProForm™/Metallic

Features a flattering boat neck with eye catching Shattered™ Glass upper panels.

**GCL100**

ChXsml, ChSml, ChMed, ChLge, ChXlge

**GAL100**

AdXsml, AdSml, AdMed, AdLge

**Estelle Leotard**

ProForm™/Metallic

Triple spliced strapwork at the back is flattering and playful. Sparkling contrast Shattered™ Glass panels at the front and back.

**GCL104**

ChXsml, ChSml, ChMed, ChLge, ChXlge

**GAL104**

AdXsml, AdSml, AdMed, AdLge

**Millie Leotard**

ProForm™/Metallic

Features a flattering boat neck with streamlined panels in sparkling Shattered™ Glass add fun and texture to your look.

**GCL121**

ChXsml, ChSml, ChMed, ChLge, ChXlge

**GAL121**

AdXsml, AdSml, AdMed, AdLge



**Sophie Leotard**

ProForm™/Metallic

V neck line at the front and back for an edgy, modern style. Sparkling Shattered Glass sleeves add fun and texture to your look.

**GCL111**

ChXsml, ChSml, ChMed, ChLge, ChXlge



**GAL111**

AdXsml, AdSml, AdMed, AdLge



**Perry Hot Short Unitard**

ProForm™

Fine straps highlight the décolletage with freedom to move. Hot short leg line for a contemporary athleisure look.

**CU04**

ChSml, ChMed, ChLge, ChXlge



**AU04**

AdXsml, AdSml, AdMed, AdLge



**Perry Unitard**

ProForm™

Fine straps highlight the décolletage with freedom to move. Full length leg for an easy all-in-one outfit for class or performance.

**CU02**

ChSml, ChMed, ChLge, ChXlge



**AU02**

AdXsml, AdSml, AdMed, AdLge



**AU02**

AdXlge



**Melody Skirt**

Georgette

The perfect length to flatter your leg line. Tie back for an adjustable fit. Georgette fabric moves gracefully with you.

**CS01**

ChXXsml\*, ChXsml, ChSml, ChMed, ChLge, ChXlge



**AS01**

AdXsml, AdSml, AdMed, AdLge



**AS01**

AdXlge

All adult colours available in AdXlge

AdXXlge  
AdXXXlge



\* JAD and MAR are in Stretch Chiffon.



**Melody Debut Skirt**

Chiffon

The perfect length to flatter your leg line. Tie back for an adjustable fit. Chiffon fabric moves gracefully with you.

**DCS01**

ChXsml, ChSml, ChMed, ChLge, ChXlge, ChXXlge



\* BPK is in Georgette. Style is gradually changing to Georgette.



**Lyla Skirt**

Georgette

The perfect length to flatter your leg lines. Hook and eye provided for a tailored fit. Georgette fabric moves gracefully with you.

**AS05**

AdXsml, AdSml, AdMed, AdLge



**AS05**

AdXlge



**Elsa Skirt**

Chiffon

The perfect length to flatter your leg line. Hook and eye provided for a seamless look and tailored fit.

**CS19**

ChXsml, ChSml, ChMed, ChLge, ChXlge



**AS19**

AdXsml, AdSml, AdMed, AdLge



# SKIRTS

## Audrey Skirt

Georgette

Mock wrap pull on style for easy wear and a polished finish. Available in a range of colours to match your favourite leotards.

### CS27

ChXXsml, ChXsml, ChSml, ChMed, ChLge, ChXlge



### AS27

AdXsml, AdSml, AdMed, AdLge



## Davina Skirt

Georgette

Knee length with angled cut to flatter your leg line. Mock wrap, pull on style for easy wear.

### CS28

ChXXsml, ChXsml, ChSml, ChMed, ChLge, ChXlge



\* MAR is in stretch chiffon.



## Heart Skirt

Printed Chiffon

The perfect length to flatter your leg line. Tie back for an adjustable fit. Heart print detail is pretty and playful.

### CS32

ChXsml, ChSml, ChMed, ChLge, ChXlge



## Raindrop Skirt

Printed Chiffon

The perfect length to flatter your leg line. Tie back for an adjustable fit. Raindrop print detail is simple and elegant.

### CS33

ChSml, ChMed, ChLge, ChXlge



### AS33

AdXsml, AdSml, AdMed, AdLge



**Melody Lace Skirt**

Stretch Lace

The perfect length to flatter your leg line. Tie back for an adjustable fit. Elegant lace for a sophisticated finish.

**CS31**

ChSml, ChMed, ChLge, ChXlge



**AS31**

AdXsml, AdSml, AdMed, AdLge



\* CER not available in ChSml.



**Bella Lace Skirt**

Stretch Lace

Mock wrap, pull on style for easy wear and a polished finish. Elegant lace for a sophisticated finish.

**CS37**

ChSml, ChMed, ChLge, ChXlge



**AS37**

AdXsml, AdSml, AdMed, AdLge



**Bella Mesh Skirt**

Tech Mesh

Mock wrap, pull on style for easy wear and a polished finish. Tech Mesh fabric adds a contemporary edge to your look.

**AS37M3**

AdXXsml, AdXsml, AdSml, AdMed, AdLge



**Emily Skirt**

Stretch Chiffon

Full circle cut for flowing movement as you dance. Easy pull on style with ultra-comfortable ProForm™ waistband.

**CS17**

ChXXsml, ChXsml, ChSml, ChMed, ChLge, ChXlge



# SKIRTS

## Emily Georgette Skirt

Georgette

Full circle cut for flowing movement as you dance. Easy pull on style with ultra-comfortable ProForm™ waistband.



### CS17G

ChXXsml, ChXsml, ChSml, ChMed, ChLge, ChXIge



## Emily Debut Skirt

Chiffon

Full circle cut for flowing movement as you dance. Easy pull on style with ultra-comfortable ProForm™ Lite waistband.



### DCS17

ChXXsml, ChXsml, ChSml, ChMed, ChLge, ChXIge, ChXXIge



\* BPK and LIL are in Georgette.

\*\* Style is gradually changing to Georgette

## Juliette Skirt

Stretch Chiffon

Full circle, knee-length cut for flowing movement as you dance. Easy pull on style with ultra-comfortable ProForm™ waistband.



### CS24

ChXsml, ChSml, ChMed, ChLge, ChXIge



## Crystal Skirt

Crystal

Crystal frilled layers for a sweet, playful effect. Easy pull on style with ultra-comfortable ProForm™ waistband.

### CS26

ChXXsml, ChXsml, ChSml, ChMed, ChLge, ChXIge



**Jessica Skirt**

ProForm™

The perfect length for jazz and contemporary dance. Pull on style with ultra-comfortable wide waistband.

**CS07**

ChXsml, ChSml, ChMed, ChLge, ChXlge



**AS07**

AdXsml, AdSml, AdMed, AdLge



**AS07**

AdXlge



**Meredith Skirt**

Georgette

Longer knee length is suitable for teachers with a tie back for an adjustable fit. Georgette fabric moves gracefully with you.

**AS03**

AdXsml, AdSml, AdMed, AdLge



**AS03**

AdXlge



**Adeline Skirt**

Georgette

Long, scooped cut for flowing movement as you dance. Wrap skirt style for an adjustable fit.

**AS10**

AdXsml, AdSml, AdMed, AdLge



**Tiana Skirt**

Georgette

Long, full circle cut for flowing movement as you dance. Pull on style with ultra-comfortable ProForm™ wide waistband.

**CS14**

ChMed, ChLge, ChXlge



**AS14**

AdXsml, AdSml, AdMed, AdLge



**AS14**

AdXlge





# SKIRTS

## Alice Skirt

Georgette

Long full circle cut for flowing movement as you dance. Easy pull on style with ultra-comfortable 1.5 inch ProForm™ waistband.

### CS38

ChLge, ChXlge



### AS38

AdXsml, AdSml, AdMed, AdLge



### AS38

AdXlge



## Matilda Character Skirt

Poplin

Longer length full circle skirt for character dance. Hook and eye provided for a tailored fit. Poplin fabric holds its shape.

### CS04

ChXsml, ChSml, ChMed, ChLge, ChXlge



### AS04

AdXsml, AdSml, AdMed, AdLge



## Matilda Ribbon Skirt

Poplin

Longer length full circle skirt for character dance. Hook and eye provided for a tailored fit. Available in a range of pretty ribbon trims.

### CS04R

ChXsml, ChSml, ChMed, ChLge, ChXlge



### AS04R

AdXsml, AdSml, AdMed, AdLge



## Erica Character Skirt

Georgette

Longer length to for character dance. Hook and eye provided for a seamless look and tailored fit.

### CS20

ChLge, ChXlge



### AS20

AdXsml, AdSml, AdMed, AdLge



**Darcey Half Tutu**

Tulle/ProForm™

Full size tulle skirt for rehearsal or performance.  
Easy pull on style with ultra-comfortable  
ProForm™ waistband and brief.

**CTUT01**

ChXsml, ChSml, ChMed,  
ChLge, ChXlge



**ATUT01**

AdXsml, AdSml,  
AdMed, AdLge



\* Tutus are made to order. Please allow 6-8 weeks for delivery.



**Addison Crop Top**

ProForm™

Simple round neck for a flattering style that works with any look. T cut racer back for comfort and a secure fit on the shoulders.



**CC01**

ChXsml, ChSml,  
ChMed, ChLge, ChXlge



**AC01**

AdXsml, AdSml,  
AdMed, AdLge



**AC01**

AdXlge



**Roxy Crop Top**

ProForm™

V neck line for an ultra-flattering look and fit. Double crossed strapwork adds unique detailing.



**CC33**

ChXsml, ChSml,  
ChMed, ChLge, ChXlge



**AC33**

AdXsml, AdSml,  
AdMed, AdLge



**Teagan Crop Top**

ProForm™

Fine straps form a racer back for freedom of movement. Underbust elastic and double front for added support and all-day comfort.



**CC56**

ChXsml, ChSml,  
ChMed, ChLge, ChXlge



**AC56**

AdXsml, AdSml,  
AdMed, AdLge



**London Crop Top**

ProForm™

Clean lines and fine straps make it perfect for layering under a leotard or singlet. Underbust elastic and double front for added support.

**CC69**

ChSml, ChMed,  
ChLge, ChXlge



**AC69**

AdXsml, AdSml,  
AdMed, AdLge



**Paris Crop Top**

ProForm™

Fine contrast straps and a classic V neck at the front for a flattering fit. Broad back straps in vibrant colour add unique detail at the back.

**CC94**

ChSml, ChMed,  
ChLge, ChXlge



**AC94**

AdXsml, AdSml,  
AdMed, AdLge



**Tate Crop Top**

ProForm™

High neckline offers coverage. Flattering cut out at the back for a high fashion look.

**CC134**

ChXsml, ChSml,  
ChMed, ChLge, ChXlge



**AC134**

AdXsml, AdSml,  
AdMed, AdLge



**Willow Crop Top**

ProForm™

On-trend high neck and wide underbust band for coverage and support. Key-hole back to help you stand out.

**CC143**

ChSml, ChMed,  
ChLge, ChXlge



**AC143**

AdXsml, AdSml,  
AdMed, AdLge



**Hazel Sports Bra**

ProForm™/Tech Mesh

Removable cups for added support and coverage. Breathable Tech Mesh panelling and adjustable straps for comfort.

**CB19**

ChLge, ChXlge



**AB19**

AdXsml, AdSml,  
AdMed, AdLge



**Olivia Crop Top**

Marle Supplex

Strapwork at the back features criss-cross and wrap back patterns to add geometric detail to your outfit.

**CC107**

ChSml, ChMed,  
ChLge, ChXlge



**AC107**

AdXsml, AdSml,  
AdMed, AdLge



**Sophia Crop Top**

Marle Supplex

Cut out back with linear Black strapwork adds stylish detail to your look.

**CC116**

ChSml, ChMed,  
ChLge, ChXlge



**AC116**

AdXsml, AdSml,  
AdMed, AdLge



**Emma Crop Top**

ProForm™/Marle Supplex

High cut at the front with a butterfly clip halterneck for an on-trend look. Cut out back for a unique and flattering fit.

**CC117**

ChSml, ChMed,  
ChLge, ChXlge



**AC117**

AdXsml, AdSml,  
AdMed, AdLge



**Ava Crop Top**

Marle Supplex

Splayed strapwork at the back creates an on-trend prism effect. Underbust elastic adds support.

**CC118**

ChSml, ChMed,  
ChLge, ChXlge



**AC118**

AdXsml, AdSml,  
AdMed, AdLge



**Harper Crop Top**

Marle Supplex/Sport Mesh

Sports Mesh panel and cut out at the back for breathability and detailing. Double front for added support.

**CC128**

ChSml, ChMed, ChLge, ChXlge



**AC128**

AdXsml, AdSml, AdMed, AdLge



**Chanel Crop Top**

ProForm™/Marle/Sport Mesh

Broad racer back in Sports Mesh with a cut out for breathability and on-trend detailing.

**CC136**

ChSml, ChMed, ChLge, ChXlge



**AC136**

AdXsml, AdSml, AdMed, AdLge



**Roxy Crop Top**

Metallic

V neckline for an ultra-flattering look and fit. Double crossed strapwork adds unique detailing.



**GCC33**

ChXsml, ChSml, ChMed, ChLge, ChXlge



**GAC33**

AdXsml, AdSml, AdMed, AdLge



**Paris Crop Top**

Metallic

Fine contrast straps and a classic V neck at the front for a flattering fit. Broad back straps in vibrant colour add unique detail at the back.

**GCC94**

ChSml, ChMed, ChLge, ChXlge



**GAC94**

AdXsml, AdSml, AdMed, AdLge



**Evelyn Crop Top**

Proform™/Metallic

High neck with Shattered Glass panelling for an on-trend look. Oval cut out adds unique detail at the back.

**GCC114**

ChXsml, ChSml, ChMed, ChLge, ChXlge



**GAC114**

AdXsml, AdSml, AdMed, AdLge



**Tilly Crop Top**

Metallic

High neck and triple crossed straps are playful and eye-catching.



**GCC135**

ChXsml, ChSml, ChMed, ChLge, ChXlge



**GAC135**

AdXsml, AdSml, AdMed, AdLge



**Roxy Crop Top**

Metallic

V neckline for an ultra-flattering look and fit. Double crossed strapwork adds unique detailing.

**SCC33**

ChXsml, ChSml, ChMed, ChLge, ChXlge



**Louisa Crop Top**

Metallic

Fine crossed strapwork adds unique detailing. Metallic Showcase fabric adds a touch of sparkle to your look.

**SCC101**

ChXsml, ChSml, ChMed, ChLge, ChXlge



**Alaina Crop Top**

Proform™/Metallic

High neck with Showcase panelling for an ultra-flattering fit. Cut out back adds unique detailing.

**SCC120**

ChXsml, ChSml, ChMed, ChLge, ChXlge, ChXXlge



**Isabelle Crop Top**

Metallic

Cut out back and sculpted lines add unique detailing. Underbust elastic and double front offer extra support and all-day comfort.

**SCC130**

ChXsml, ChSml, ChMed, ChLge, ChXlge, ChXXlge



**Kristie Singlet**

ProForm™

Classic V neck with contrast white trim for a flattering look. Double crossed strapwork draws the eye.

**CC10**

ChXsml, ChSml, ChMed, ChLge, ChXlge



**AC10**

AdXsml, AdSml, AdMed, AdLge



**AC10**

AdXlge



**Roxy Singlet**

ProForm™

Classic V for an ultra-flattering fit. Shelf bra offers extra support and all-day comfort (Size ChLge upwards).

**CC13**

ChSml, ChMed, ChLge, ChXlge



**AC13**

AdXsml, AdSml, AdMed, AdLge





**Chelsea Singlet**

ProForm™

Crop and singlet layered effect in one easy garment. Shelf bra offers extra support and all-day comfort.

**CC40**

ChXsml, ChSml, ChMed, ChLge, ChXlge



**AC40**

AdXsml, AdSml, AdMed, AdLge



**AC40**

AdXlge



**Teagan Singlet**

ProForm™

Fine straps and a racer back for a close fit. Shelf bra offers extra support and all-day comfort (Size ChLge upwards).



**CC54**

ChXsml, ChSml, ChMed, ChLge, ChXlge



**AC54**

AdXsml, AdSml, AdMed, AdLge



**AC54**

AdXlge

All colours available in AdXlge



**Addison Singlet**

ProForm™

Versatile with a simple round neck and clean lines. Broad straps and a wide T back for a comfortable fit.



**CC60**

ChXsml, ChSml, ChMed, ChLge, ChXlge



**AC60**

AdXsml, AdSml, AdMed, AdLge



**AC60**

AdXlge

All colours available in AdXlge



**Chloe Singlet**

ProForm™

Splayed strapwork at the back creates an on-trend prism effect. Double fronted upper for added support and all-day comfort.

**CC110**

ChSml, ChMed, ChLge, ChXlge



**AC110**

AdXsml, AdSml, AdMed, AdLge



**Natalie Singlet**

Marle Supplex/Sport Mesh

Racer back with a Sports Mesh insert for breathability and on-trend detailing.

**CC129**

ChSml, ChMed, ChLge, ChXlge



**AC129**

AdXsml, AdSml, AdMed, AdLge



**Robin Tank**

Cotton/Sport Mesh

Simple round neck for a flattering unisex style. Mesh panelling at the sides for increased breathability.

**CAT6**

ChSml, ChMed, ChLge, ChXlge



**AAT6**

AdXsml, AdSml, AdMed, AdLge



**AAT6**

AdXlge



**Blair Singlet**

Eco Breathe

Athletic neckline with loose fit for freedom of movement.

**CAT12**

ChSml, ChMed, ChLge, ChXlge



**AAT12**

AdXsml, AdSml, AdMed, AdLge



**Tessa Singlet**

Eco Breathe

Cut long for easy layering and a relaxed feel. Broad racer back for comfort.

**CAT16**

ChXsml, ChSml, ChMed, ChLge, ChXlge



**AAT16**

AdXsml, AdSml, AdMed, AdLge



**AAT16**

AdXlge



**Hannah Singlet**

Eco Breathe

Loose fit with cut out sides for maximum flow and movement. Round neck cut and racer back for layering versatility.



**CAT51**

ChSml, ChMed, ChLge, ChXlge

BLK

**AAT51**

AdXsml, AdSml, AdMed, AdLge

BLK

**AAT51**

AdXlge

BLK



**Riley Crop**

Eco Breathe

Casual style layers perfectly over your dancewear. Cropped, loose fit for freedom of movement.



**CAT76**

CnSml, ChMed, ChLge, ChXlge

BLK WHT

**AAT76**

AdXsml, AdSml, AdMed, AdLge

BLK WHT



**Cat Dance Tank**

Eco Breathe

Your must-wear top for commercial classes, hip-hop, jazz and beyond. Featuring a round neckline with a beautiful, relaxed fit.

**CAT87**

ChSml, ChMed, ChLge, ChXlge

BLK WHT

**AAT87**

AdXsml, AdSml, AdMed, AdLge

BLK WHT



**Parker Tee**

Cotton

Simple round neck for a flattering unisex style. Relaxed fit for your all-day athleisure look.



**CAT5**

ChXsml, ChSml, ChMed, ChLge, ChXlge

BLK WHT

**AAT5**

AdXsml, AdSml, AdMed, AdLge

BLK WHT

**AAT5**

AdXlge  
AdXXlge  
AdXXXlge

BLK WHT



**Frankie Cropped Tee**

Modal

Loose fit with oversize short sleeves for maximum flow and movement. #DANCE print to tell the world what you love to do.

**CAT77D**

ChSml, ChMed, ChLge, ChXlge



**AAT77D**

AdXsml, AdSml, AdMed, AdLge



**Parker Long Sleeve Tee**

Cotton

Simple round neck with long sleeves for a flattering unisex style. Relaxed fit for your all-day athleisure look.

**CAT25**

ChXsml, ChSml, ChMed, ChLge, ChXlge



**AAT25**

AdXsml, AdSml, AdMed, AdLge



**AAT25**

AdXLge, AdXXlge, AdXXXlge



**Ingrid Pullover**

Modal

Loose fit with oversize sleeves for maximum flow and movement. Scoop neck for a comfortable, flattering fit.

**CAT85**

ChSml, ChMed, ChLge, ChXlge



**AAT85**

AdXsml, AdSml, AdMed, AdLge



**AAT85**

AdXLge



**Cameron Hoodie**

Unbrushed Fleece

Hood with drawstring for extra functionality. Relaxed unisex fit for versatility.

**CAT4**

ChSml, ChMed, ChLge, ChXlge



**AAT4**

AdXsml, AdSml, AdMed, AdLge



**AAT4**

AdXLge, AdXXlge



**Jordan Pullover**

Ultra Fleece

Front pocket and a zip neck opening for comfort and versatility.

**CAT15**ChXsml, ChSml, ChMed,  
ChLge, ChXlge**AAT15**AdXsml, AdSml,  
AdMed, AdLge**AAT15**

AdXlge

**Brooklyn Cropped Sweater**

Unbrushed Fleece

Cropped length for a chic style statement. Raglan sleeve for an increased range of movement.

**CAT30**ChSml, ChMed,  
ChLge, ChXlge**AAT30**AdXsml, AdSml,  
AdMed, AdLge**AAT30**

AdXlge

**Brooklyn Dance Jacket**

Unbrushed Fleece

V neck style layers over a variety of outfits. Front pockets for extra functionality. Raglan sleeve for an increased range of movement.

**CAT3**ChSml, ChMed,  
ChLge, ChXlge**AAT3**AdXsml, AdSml,  
AdMed, AdLge**AAT3**

AdXlge

**Taylor Jacket**

Polyester Cotton

Retro sports stripes add colour and fun to your style. Front pockets for extra functionality.

**CAT2**ChSml, ChMed,  
ChLge, ChXlge**AAT2**

AdSml, AdMed, AdLge

**AAT2**

AdXlge



**Jordan Jacket**

Ultra Fleece

The ultimate in luxury lounge wear with a flattering scooped back for a relaxed fit.



**CAT13**

ChXsml, ChSml, ChMed, ChLge, ChXlge



**AAT13**

AdXsml, AdSml, AdMed, AdLge



**AAT13**

AdXlge



**Eden Jacket**

ProForm™ Max/Aero Mesh

Breathable panelling for all-day comfort. Flattering sculpted design lines. Cuffed sleeves and a unisex cut for a versatile fit.

**CAT70**

ChSml, ChMed, ChLge, ChXlge



**AAT70**

AdXsml, AdSml, AdMed, AdLge



**AAT70**

AdXlge



**Lara Endurance Jacket**

ProForm™ Luxe/Aero Mesh

Breathable panelling for all-day comfort. Flattering sculpted design lines. Cuffed sleeves and a slim cut for the perfect fit.



**CAT90**

ChSml, ChMed, ChLge, ChXlge



**AAT90**

AdXsml, AdSml, AdMed, AdLge



**AAT90**

AdXlge, AdXXlge



**Astrid Low Cut Brief**

ProForm™

A flattering high waist for support. Low cut leg line for modesty and comfort.

**CB131**

ChSml, ChMed, ChLge, ChXlge

BLK

**AB131**

AdXsml, AdSml, AdMed, AdLge

BLK



**Astrid High Cut Brief**

ProForm™

A flattering high waist for support. High cut leg line, perfect for wearing in an audition or onstage.

**CB132**

ChSml, ChMed, ChLge, ChXlge

BLK FLE RED WHT

**AB132**

AdXsml, AdSml, AdMed, AdLge

BLK FLE RED WHT



**Anna Boy Leg**

ProForm™/Marle Supplex

Boy Leg cut keeps shorts in place as you move. Crossed V waistband is flattering and comfortable.

**CT69**

ChSml, ChMed, ChLge, ChXlge

BLK EBL PPK PPR VBG

**AT69**

AdXsml, AdSml, AdMed, AdLge

BLK EBL PPK PPR VBG



**Anna Boy Leg**

Proform™/Metallic

Boy Leg cut keeps shorts in place as you move. Crossed V waistband is flattering and comfortable.

**SCT69**

ChXsml, ChSml, ChMed, ChLge, ChXlge, ChXXlge

AQU CBT CDY FUS LIL RED



# BOTTOMS

## Indie Boy Leg

CottonLuxe™

Boy Leg cut keeps shorts in place as you move. Crossed V waistband is flattering and comfortable.

### CT73

ChXsml, ChSml, ChMed, ChLge, ChXlge



### AT73

AdXsml, AdSml, AdMed, AdLge



## Indie Boy Leg

ProForm™

Boy Leg cut keeps shorts in place as you move. Crossed V waistband is flattering and comfortable.



### CT73T

ChXsml, ChSml, ChMed, ChLge, ChXlge



### AT73T

AdXsml, AdSml, AdMed, AdLge



## Indie Boy Leg

Metallic

Boy Leg cut keeps shorts in place as you move. Crossed V waistband is flattering and comfortable.

### GCT73

ChXsml, ChSml, ChMed, ChLge, ChXlge



### GAT73

AdXsml, AdSml, AdMed, AdLge



## Ella Boy Leg

ProForm™/Marle Supplex

Wider fit waistband is flattering and comfortable. Contrast trim in playful Marle adds colour to your look.

### CT72

ChSml, ChMed, ChLge, ChXlge



### AT72

AdXsml, AdSml, AdMed, AdLge





**Christina Short**

CottonLuxe™

Simple design for a clean, athletic vibe. V waistband is flattering and comfortable.



**CT09**

ChXXsml, ChXsml, ChSml, ChMed, ChLge, ChXlge



**AT09**

AdXsml, AdSml, AdMed, AdLge



**AT09**

AdXlge



**Christina Short**

ProForm™

Simple design for a clean, athletic vibe. V waistband is flattering and comfortable.



**CT09T**

ChXXsml\*, ChXsml, ChSml, ChMed, ChLge, ChXlge



**AT09T**

AdXsml, AdSml, AdMed, AdLge



**AT09T**

AdXlge



\* ChXXsml available in BLK only



**Christina Lycra Short**

Nylon Lycra™

Simple design for a clean, athletic vibe. V waistband is flattering and comfortable.

**CT09L**

ChXsml, ChSml, ChMed, ChLge, ChXlge



**AT09L**

AdXsml, AdSml, AdMed, AdLge



**AT09L**

AdXlge



**Christina Debut Short**

ProForm Lite™

Simple design for a clean, athletic vibe. V waistband is flattering and comfortable.



**DCT09**

ChXXsml, ChXsml, ChSml, ChMed, ChLge, ChXlge



**Alexa Short**

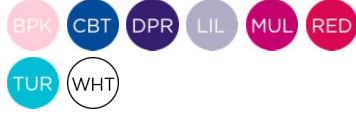
CottonLuxe™

Subtle contrast piping for a clean, athletic vibe. V waistband is flattering and comfortable.



**CT10**

ChXsml, ChSml, ChMed, ChLge, ChXlge



**AT10**

AdXsml, AdSml, AdMed, AdLge



**Alexa Short**

ProForm™

Subtle contrast piping for a clean, athletic vibe. V waistband is flattering and comfortable.



**CT10T**

ChXsml, ChSml, ChMed, ChLge, ChXlge



**AT10T**

AdXsml, AdSml, AdMed, AdLge



**Madelyn Boy Leg**

Proform™/Metallic

High waistband is flattering and comfortable with extra coverage. Contrast panels add colour to your look.

**SCT77**

ChXsml, ChSml, ChMed, ChLge, ChXlge, ChXXlge



**Montana Short**

ProForm™

Relaxed fit roll top waistband is ultra-comfortable. Contrast band adds a pop of colour to your look.



**CAS2**

ChXsml, ChSml, ChMed, ChLge, ChXlge



**AAS2**

AdXsml, AdSml, AdMed, AdLge



**AAS2**

AdXlge

All colours available in AdXlge





**Brooklyn Dance Short**

Unbrushed Fleece

Side panel inserts for a free-moving cut. Flattering, comfortable and on-trend. Classic sporty style for all-day wear.

**CAS3**

ChSml, ChMed, ChLge, ChXlge



**AAS3**

AdXsml, AdSml, AdMed, AdLge



**AAS3**

AdXlge



\* Available April

**Molly Short**

ProForm™

Two tone wide waistband is comfortable for all-day wear. Looser fit split hem for freedom of movement.

**CAS11**

ChXsml, ChSml, ChMed, ChLge, ChXlge, ChXXlge



**Molly Short**

Proform™/Metallic

Two tone wide waistband is comfortable for all-day wear. Looser fit split hem for freedom of movement.

**SCAS11**

ChXsml, ChSml, ChMed, ChLge, ChXlge, ChXXlge



**Molly Short**

Proform™/Metallic

Two tone wide waistband is comfortable for all-day wear. Looser fit split hem for freedom of movement.

**GCAS11**

ChXsml, ChSml, ChMed, ChLge, ChXlge



**GAAS11**

AdXsml, AdSml, AdMed, AdLge



# BOTTOMS

## Lily Short

ProForm™/Marle Supplex

Wide waistband is flattering and comfortable. Contrast trim in playful Marle and ProForm™ adds colour to your look.

### CAS19

ChSml, ChMed, ChLge, ChXlge



### AAS19

AdXsml, AdSml, AdMed, AdLge



## Kylie Short

Proform™/Metallic

Glittering waistband gives a playful, unique edge to your look. Wide waist is comfortable for all-day wear.

### GCT52

ChXsml, ChSml, ChMed, ChLge, ChXlge



### GAT52

AdXsml, AdSml, AdMed, AdLge



## Mia Boy Leg

ProForm™/Marle Supplex

High waistband is flattering and comfortable with extra coverage. Contrast trim in playful Marle adds colour to your look.

### CT81

ChSml, ChMed, ChLge, ChXlge



### AT81

AdXsml, AdSml, AdMed, AdLge



## Mia Boy Leg

Proform™/Metallic

High waistband is flattering and comfortable with extra coverage. Contrast trim in Shattered Glass adds sparkle to your look.

### GCT81

ChXsml, ChSml, ChMed, ChLge, ChXlge



### GAT81

AdXsml, AdSml, AdMed, AdLge



**Oakley Hot Short**

CottonLuxe™

Elastic waist and leg band for extra comfort and a close fit. Cut short at the leg for freedom of movement.



**CT03**

ChXsml, ChSml, ChMed, ChLge, ChXlge



**AT03**

AdXsml, AdSml, AdMed, AdLge



**AT03**

AdXlge



**Oakley Hot Short**

ProForm™

Elastic waist and leg band for extra comfort and a close fit. Cut short at the leg for freedom of movement.



**CT03T**

ChXsml, ChSml, ChMed, ChLge, ChXlge



**AT03T**

AdXsml, AdSml, AdMed, AdLge



**AT03T**

AdXlge



**Oakley Bike Short**

CottonLuxe™

Elastic waist for extra comfort and a close fit. Cut longer at the leg to flatter your shape.



**CT04**

ChXsml, ChSml, ChMed, ChLge, ChXlge



**AT04**

AdXsml, AdSml, AdMed, AdLge



**Oakley Bike Short**

ProForm™

Elastic waist for extra comfort and a close fit. Cut longer at the leg to flatter your shape.



**CT04T**

ChXsml, ChSml, ChMed, ChLge, ChXlge



**AT04T**

AdXsml, AdSml, AdMed, AdLge



# BOTTOMS

## Oakley Capri

CottonLuxe™

Elastic waist for extra comfort and a close fit. Cut to under the knee for freedom of movement.



### CT06

ChXsml, ChSml, ChMed, ChLge, ChXlge



### AT06

AdXsml, AdSml, AdMed, AdLge



### AT06

AdXlge



## Oakley Capri

ProForm™

Elastic waist for extra comfort and a close fit. Cut to under the knee for freedom of movement.



### CT06T

ChXsml, ChSml, ChMed, ChLge, ChXlge



### AT06T

AdXsml, AdSml, AdMed, AdLge



### AT06T

AdXlge



## Oakley Legging

CottonLuxe™

Elastic waist for extra comfort and a close fit. Full length leg for coverage and warmth.



### CT05

ChXXsml, ChXsml, ChSml, ChMed, ChLge, ChXlge



### AT05

AdXsml, AdSml, AdMed, AdLge



### AT05

AdXlge



## Oakley Legging

ProForm™

Elastic waist for extra comfort and a close fit. Full length leg for coverage and warmth.



### CT05T

ChXsml, ChSml, ChMed, ChLge, ChXlge



### AT05T

AdXsml, AdSml, AdMed, AdLge



### AT05T

AdXlge



**Oakley Lycra Legging**

Nylon Lycra

Elastic waist for extra comfort and a close fit. Full length leg for coverage and warmth.

**CT05L**

ChXsml, ChSml, ChMed, ChLge, ChXlge

BLK

**AT05L**

AdXsml, AdSml, AdMed, AdLge

BLK



**Madison Capri**

ProForm™

Mid rise wide waistband is flattering and comfortable. Cut under the knee for freedom of movement.

**CT61**

ChSml, ChMed, ChLge, ChXlge

BLK EBL PPK PPR RED VBG

**AT61**

AdXsml, AdSml, AdMed, AdLge

BLK EBL PPK PPR RED VBG

**AT61**

AdXlge

BLK



**Madison 7/8 Legging**

ProForm™

Mid rise wide waistband is flattering and comfortable. 7/8 length for comfort and freedom of movement.



**CT76**

ChSml, ChMed, ChLge, ChXlge

BLK

**AT76**

AdXsml, AdSml, AdMed, AdLge

BLK

**AT76**

AdXlge, AdXXlge

BLK



**Madison Legging**

ProForm™

Mid rise wide waistband is flattering and comfortable. Full length leg for coverage and warmth.



**CT62**

ChSml, ChMed, ChLge, ChXlge

BLK

**AT62**

AdXsml, AdSml, AdMed, AdLge

BLK

**AT62**

AdXlge

BLK



# BOTTOMS

## Lydia Contrast Short

ProForm™

Contrast band adds a pop of vibrant colour to your look. Straight mid rise waistband is flattering and comfortable.



### CT46

ChXXsml\*, ChXsml, ChSml, ChMed, ChLge, ChXlge



### AT46

AdXsml, AdSml, AdMed, AdLge



### AT46

AdXlge



\* ChXXsml available in BLK only



## Lydia Short

ProForm™

Clean design lines and single colour style for a fresh look. Straight mid rise waistband is flattering and comfortable.



### CT58

ChXsml, ChSml, ChMed, ChLge, ChXlge



### AT58

AdXsml, AdSml, AdMed, AdLge



## Lydia Capri

ProForm™

Mid rise straight waistband is flattering and comfortable. Cut under the knee for freedom of movement.



### CT39

ChXsml, ChSml, ChMed, ChLge, ChXlge



### AT39

AdXsml, AdSml, AdMed, AdLge



### AT39

AdXlge



## Lydia Legging

ProForm™

Mid rise straight waistband is flattering and comfortable. Full length leg for coverage and warmth.



### CT44

ChXsml, ChSml, ChMed, ChLge, ChXlge



### AT44

AdXsml, AdSml, AdMed, AdLge



### AT44

AdXlge





**Claudia Short**  
ProForm™

Contrast band adds playful detail to your outfit. Crossed V waist is flattering and comfortable.



**CT08**  
ChXsml, ChSml,  
ChMed, ChLge, ChXlge



**AT08**  
AdXsml, AdSml,  
AdMed, AdLge



**AT08**  
AdXlge



**Claudia Capri**  
CottonLuxe™

Crossed V waist is flattering and comfortable. Cut under the knee for freedom of movement.



**CT07**  
ChXXsml, ChXsml, ChSml,  
ChMed, ChLge, ChXlge



**AT07**  
AdXsml, AdSml,  
AdMed, AdLge



**AT07**  
AdXlge



**Claudia Capri**  
ProForm™

Contrast band adds playful detail to your outfit. Crossed V waist is flattering and comfortable. Cut under the knee for freedom of movement.



**CT07T**  
ChXsml, ChSml,  
ChMed, ChLge, ChXlge



**AT07T**  
AdXsml, AdSml,  
AdMed, AdLge



**AT07T**  
AdXlge



**Skyler Short**  
ProForm™

Soft, extra wide waistband for all day wear. High cut waist and gusset feature designed for comfort.

**CT88**  
ChSml, ChMed,  
ChLge, ChXlge



**AT88**  
AdXsml, AdSml,  
AdMed, AdLge



# BOTTOMS

## Dylan Bike Short

ProForm™

Clean design for an athletic look. Soft, wide waistband for all day wear.



### CT14

ChXsml, ChSml, ChMed, ChLge, ChXlge

BLK

### AT14

AdXsml, AdSml, AdMed, AdLge

BLK

### AT14

AdXlge

BLK



## Dylan Capri

ProForm™

Cut just under the knee for freedom of movement. Soft, wide waistband for all day wear.



### CT15

ChXsml, ChSml, ChMed, ChLge, ChXlge

BLK

### AT15

AdXsml, AdSml, AdMed, AdLge

BLK

### AT15

AdXlge, AdXXlge

BLK



## Dylan 7/8 Legging

ProForm™

Cut to 7/8 length for a stylish look. Soft, wide waistband for all day wear.



### CT16

ChXsml, ChSml, ChMed, ChLge, ChXlge

BLK

### AT16

AdXsml, AdSml, AdMed, AdLge

BLK

### AT16

AdXlge, AdXXlge

BLK



## Dylan Legging

ProForm™

Full length for coverage and warmth. Soft, wide waistband for all day wear.



### CT17

ChXsml, ChSml, ChMed, ChLge, ChXlge

BLK

### AT17

AdXsml, AdSml, AdMed, AdLge

BLK

### AT17

AdXlge, AdXXlge

BLK



**Claire Capri**

ProForm™

Coloured panelling adds playful detail to your look. Mid rise waistband is flattering and comfortable.



**CT63**

ChSml, ChMed, ChLge, ChXlge



**AT63**

AdXsml, AdSml, AdMed, AdLge



**Claire 7/8 Legging**

ProForm™

Coloured panelling adds playful detail to your look. Mid rise waistband is flattering and comfortable.



**CT90**

ChSml, ChMed, ChLge, ChXlge



**AT90**

AdXsml, AdSml, AdMed, AdLge



**Keira Short**

ProForm™

Engineered to sculpt and contour the waist. High cut waist and gusset feature are designed for comfort.



**CAS17**

ChXsml, ChSml, ChMed, ChLge, ChXlge



**AAS17**

AdXsml, AdSml, AdMed, AdLge



**AAS17**

AdXlge, AdXXlge



**Keira Short**

CottonLuxe™

Engineered to sculpt and contour the waist. High cut waist and gusset feature are designed for comfort.



**CAS17C**

ChXsml, ChSml, ChMed, ChLge, ChXlge



**AAS17C**

AdXsml, AdSml, AdMed, AdLge



**AAS17C**

AdXlge



# BOTTOMS

## Keira Capri

ProForm™

Engineered to sculpt and contour the waist.  
Cut under the knee for freedom of movement.



### CT56

ChXsml, ChSml, ChMed,  
ChLge, ChXIge

BLK

### AT56

AdXsml, AdSml,  
AdMed, AdLge

BLK

### AT56

AdXIge  
AdXXIge

BLK



## Keira 7/8 Legging

ProForm™

Engineered to sculpt and contour the waist.  
7/8 length for comfort freedom of movement.



### CT66

ChXsml, ChSml, ChMed, ChLge,  
ChXIge, ChXXIge

BLK

### AT66

AdXsml, AdSml,  
AdMed, AdLge

BLK

### AT66

AdXIge  
AdXXIge

BLK



## Keira Legging

ProForm™

Engineered to sculpt and contour the waist.  
Full length leg for coverage and warmth.



### CT86

ChXsml, ChSml, ChMed,  
ChLge, ChXIge

BLK

### AT86

AdXsml, AdSml,  
AdMed, AdLge

BLK

### AT86

AdXIge  
AdXXIge

BLK



## Keira Legging

CottonLuxe™

Engineered to sculpt and contour the waist.  
Full length leg for coverage and warmth.



### CT86C

ChXsml, ChSml, ChMed,  
ChLge, ChXIge

BLK

### AT86C

AdXsml, AdSml,  
AdMed, AdLge

BLK

### AT86C

AdXIge

BLK



**Bailey 7/8 Legging**

Marle Supplex/Sport Mesh

Engineered to sculpt and contour the waist. Sports Mesh panelling adds unique detail and breathability.

**CT89**

ChSml, ChMed, ChLge, ChXlge



**AT89**

AdXsml, AdSml, AdMed, AdLge



**Bailey 7/8 Legging**

Proform™/Metallic

Engineered to sculpt and contour the waist. Striking Shattered Glass panelling at the calf.

**GCT89**

ChXsml, ChSml, ChMed, ChLge, ChXlge



**GAT89**

AdXsml, AdSml, AdMed, AdLge



**Zoe 7/8 Legging**

ProForm™/Marle Supplex/Tech Mesh

Wide waistband for comfortable coverage. Vibrant Marle panelling slims and elongates the leg.

**CT82**

ChSml, ChMed, ChLge, ChXlge



**AT82**

AdXsml, AdSml, AdMed, AdLge



**Gia Legging**

ProForm™/Marle Supplex/Sport Mesh

Sports Mesh and Marle panelling at the calf add unique detail and breathability. High, wide waistband for coverage.

**CT95**

ChSml, ChMed, ChLge, ChXlge



**AT95**

AdXsml, AdSml, AdMed, AdLge



# BOTTOMS

## Ellis Pant

CottonLuxe™

Mid rise straight waistband for comfort. Full length straight leg for freedom of movement.

### CP08

ChSml, ChMed, ChLge, ChXlge

BLK

### AP08

AdXsml, AdSml, AdMed, AdLge

BLK

### AP08

AdXlge

BLK



## Harlow Pant

CottonLuxe™

Low rise crossed V waist is flattering and comfortable. Full length bootleg for freedom of movement.

### CP09

ChXXsml, ChXsml, ChSml, ChMed, ChLge, ChXlge

BLK

### AP09

AdXsml, AdSml, AdMed, AdLge

BLK

### AP09

AdXlge

BLK



## Harlow Pant

ProForm™

Low rise crossed V waist is flattering and comfortable. Full length bootleg for freedom of movement.

### CP09T

ChXsml, ChSml, ChMed, ChLge, ChXlge

BLK

### AP09T

AdXsml, AdSml, AdMed, AdLge

BLK

### AP09T

AdXlge

BLK



## Taylor Pant

Polyester Cotton

Retro sports stripes add colour and fun to your style. Drawstring for comfort and the perfect fit. Zip pockets for extra functionality.

### CAP2

ChSml, ChMed, ChLge, ChXlge

BLK DPR MUL RED TUR

### AAP2

AdXsml, AdSml, AdMed, AdLge

BLK DPR MUL RED TUR

### AAP2

AdXlge

BLK DPR  
MUL RED  
TUR



**Brooklyn Track Pant**

Unbrushed Fleece

Straight leg for freedom of movement. Drawstring for comfort and the perfect fit. Zip pockets for extra functionality.



**CAP3**

ChSml, ChMed, ChLge, ChXlge

BLK

**AAP3**

AdXsml, AdSml, AdMed, AdLge

BLK

**AAP3**

AdXlge

BLK



**Logan Track Pant**

Polyester

Slim fit design is ultra-flattering. White contrast detailing at the waist and leg for a retro sports style.

**CAP44**

ChMed, ChLge, ChXlge

BLK

**AAP44**

AdXsml, AdSml, AdMed, AdLge

BLK



**Avery Track Pant**

Unbrushed Fleece

Slimline design with rib cuffs for the perfect fit. Drawcord at the waist for sizing versatility.



**CAP45**

ChMed, ChLge, ChXlge

BLK GML

**AAP45**

AdXsml, AdSml, AdMed, AdLge

BLK GML



**Jordan Track Pant**

Ultra Fleece

Unisex slimline design with cuffs for the perfect fit. Drawcord at the waist for sizing versatility.



**CAP13**

ChXsml, ChSml, ChMed, ChLge, ChXlge

BLK

**AAP13**

AdXsml, AdSml, AdMed, AdLge

BLK

**AAP13**

AdXlge

BLK



## BOTTOMS

### Alex Track Pant

Unbrushed Fleece

Slimline design with elastic at the ankle.  
Drawcord at the waist for sizing versatility.

### CAP46

ChMed, ChLge, ChXlge



### AAP46

AdXsml, AdSml,  
AdMed, AdLge



### Eden Track Pant

ProForm™ Max/Aero Mesh

Flattering tapered unisex fit. Zip pockets  
for added functionality. Lightweight Aero  
Mesh detailing adds unique detail.

### CAP70

ChSml, ChMed,  
ChLge, ChXlge



### AAP70

AdXsml, AdSml,  
AdMed, AdLge



### AAP70

AdXlge





**Emery Leotard**

Clean, uninterrupted lines for a classic fit.



ProForm™

**CL01**

ChXXsml, ChXsml, ChSml, ChMed, ChLge, ChXlge



**Jesse Leotard**

Short sleeves for versatility in any season. Clean, uninterrupted lines for a modern look.



ProForm™

**CL02**

ChXXsml, ChXsml, ChSml, ChMed, ChLge, ChXlge



**Conrad Leotard**

Short sleeves for coverage and freedom of movement. Clean, uninterrupted lines for versatility and layering under tights.



ProForm™

**BL02**

ChLge, ChXlge



**ML02**

AdXsml, AdSml, AdMed, AdLge



**ML02**

AdXlge



**Louis Leotard**

Short sleeves for coverage and freedom of movement. Clean, uninterrupted lines and a G-string cut for layering under tights.



ProForm™

**BL07**

ChLge, ChXlge



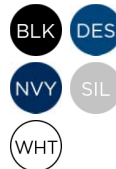
**ML07**

AdXsml, AdSml, AdMed, AdLge



**ML07**

AdXlge



**Aiden Unitard**

ProForm™

Sleeveless thick strap style and scoop neck gives you freedom to move. Full length leg for an easy all-in-one outfit for class or performance.



**BU06**

ChLge, ChXlge



**MU06**

AdXsml, AdSml, AdMed, AdLge



**Grayson Unitard**

ProForm™

Short sleeve style and scoop neck gives you freedom to move. Full length leg for an easy all-in-one outfit for class or performance.



**BU07**

ChLge, ChXlge



**MU07**

AdXsml, AdSml, AdMed, AdLge



**Caleb Tank**

ProForm™

Versatile with a simple round neck and clean lines. Broad straps and a wide back for a comfortable fit.



**CC20**

ChSml, ChMed, ChLge, ChXlge



**AC20**

AdXsml, AdSml, AdMed, AdLge



**AC20**

AdXlge



**Calvin Tank**

ProForm™

Broad straps and a wide back for a comfortable fit. Contrast trim adds a pop of colour.



**CC64**

ChXsml, ChSml, ChMed, ChLge, ChXlge



**AC64**

AdXsml, AdSml, AdMed, AdLge



**AC64**

AdXlge



**Robin Tank**

Cotton/Sport Mesh

Simple round neck for a flattering unisex style. Mesh panelling at the sides for increased breathability.



**CAT6**

ChSml, ChMed, ChLge, ChXlge



**AAT6**

AdXsml, AdSml, AdMed, AdLge



**AAT6**

AdXlge



**Mens' Cut Away Singlet**

Cotton

Versatile with a simple round neck and clean lines. Cut away at the sides for maximum freedom of movement.

**AAT54C**

AdXsml, AdSml, AdMed, AdLge



**AAT54C**

AdXlge



**Brayden Tank**

Organic Cotton

Broad shoulders for comfortable coverage. Relaxed fit with pocket detail for a casual look.

**CAT89**

ChMed, ChLge, ChXlge



**AAT89**

AdSml, AdMed, AdLge



**AAT89**

AdXlge



**Joshua Tee**

ProForm™

Versatile with a classic V neck and clean lines. Short sleeves for comfortable coverage.



**CC21**

ChXsml, ChSml, ChMed, ChLge, ChXlge



**AC21**

AdXsml, AdSml, AdMed, AdLge



**AC21**

AdXlge



**Parker Tee**

Cotton

Simple round neck for a flattering unisex style. Relaxed fit for your all-day athleisure look.



**CAT5**

ChXsml, ChSml, ChMed, ChLge, ChXlge



**AAT5**

AdXsml, AdSml, AdMed, AdLge



**AAT5**

AdXlge, AdXXlge, AdXXXlge



**Cameron Hoodie**

Unbrushed Fleece

Hood with drawstring for extra functionality. Relaxed unisex fit for versatility.



**CAT4**

ChSml, ChMed, ChLge, ChXlge



**AAT4**

AdXsml, AdSml, AdMed, AdLge



**AAT4**

AdXlge, AdXXlge



**Jordan Pullover**

Ultra Fleece

Front pocket and a zip neck opening for comfort and versatility.



**CAT15**

ChXsml, ChSml, ChMed, ChLge, ChXlge



**AAT15**

AdXsml, AdSml, AdMed, AdLge



**AAT15**

AdXlge



**Jordan Jacket**

Ultra Fleece

The ultimate in luxury lounge wear with a flattering scooped back for a relaxed fit.



**CAT13**

ChXsml, ChSml, ChMed, ChLge, ChXlge



**AAT13**

AdXsml, AdSml, AdMed, AdLge



**AAT13**

AdXlge



**Eden Jacket**

ProForm™ Max/Aero Mesh

Breathable panelling for all-day comfort. Flattering sculpted design lines. Cuffed sleeves and a unisex cut for a versatile fit.



**CAT70**

ChSml, ChMed, ChLge, ChXlge

BLK

**AAT70**

AdXsml, AdSml, AdMed, AdLge

BLK

**AAT70**

AdXlge

BLK



**Oakley Hot Short**

CottonLuxe™

Elastic waist and leg band for extra comfort and a close fit. Cut short at the leg for freedom of movement.



**CT03**

ChXsml, ChSml, ChMed, ChLge, ChXlge

BLK

**AT03**

AdXsml, AdSml, AdMed, AdLge

BLK

**AT03**

AdXlge

BLK



**Oakley Hot Short**

ProForm™

Elastic waist and leg band for extra comfort and a close fit. Cut short at the leg for freedom of movement.



**CT03T**

ChXsml, ChSml, ChMed, ChLge, ChXlge

BLK NVY

**AT03T**

AdXsml, AdSml, AdMed, AdLge

BLK NVY

**AT03T**

AdXlge

BLK



**Oakley Bike Short**

CottonLuxe™

Elastic waist and leg band for extra comfort and a close fit. Cut longer at the leg.



**CT04**

ChXsml, ChSml, ChMed, ChLge, ChXlge

BLK

**AT04**

AdXsml, AdSml, AdMed, AdLge

BLK



**Oakley Bike Short**

ProForm™

Elastic waist and leg band for extra comfort and a close fit. Cut longer at the leg.



**CT04T**

ChXsml, ChSml, ChMed, ChLge, ChXlge



**AT04T**

AdXsml, AdSml, AdMed, AdLge



**Oakley Capri**

ProForm™

Elastic waist for extra comfort and a close fit. Cut under the knee for freedom of movement.



**CT06T**

ChXsml, ChSml, ChMed, ChLge, ChXlge



**AT06T**

AdXsml, AdSml, AdMed, AdLge



**AT06T**

AdXlge



**Oakley Legging**

ProForm™

Elastic waist for extra comfort and a close fit. Full length leg for coverage and warmth.



**CT05T**

ChXsml, ChSml, ChMed, ChLge, ChXlge



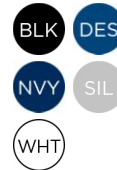
**AT05T**

AdXsml, AdSml, AdMed, AdLge



**AT05T**

AdXlge



**Matthew Short**

ProForm™

Drawcord waist for extra comfort. Cut to a relaxed short length for freedom of movement.



**CAS24**

ChXXsml, ChXsml, ChSml, ChMed, ChLge, ChXlge



\* NVY not available in XXsml



**Vance Short**

Unbrushed Fleece

Clean design and loose fit for an athletic look. Drawcord waist for extra comfort and an adjustable fit.

**CAS25**

ChSml, ChMed, ChLge, ChXlge

BLK

**AAS25**

AdXsml, AdSml, AdMed, AdLge

BLK

**AAS25**

AdXlge

BLK



**Blaine Short**

Polyester

Soft, draping effect that flows as you move. Elastic waist for extra comfort and an adjustable fit.

**CAS26**

ChMed, ChLge, ChXlge

BLK

**MAS26**

AdXsml, AdSml, AdMed, AdLge

BLK

**MAS26**

AdXlge

BLK



**Liam Short**

Unbrushed Fleece

Slim fit design with pockets for the studio and the street. Drawcord waist for extra comfort and an adjustable fit.

**CAS28**

ChMed, ChLge, ChXlge

BLK DGY GML

**MAS28**

AdSml, AdMed, AdLge

BLK DGY GML

**MAS28**

AdXlge

BLK DGY GML



**Ellis Pant**

CottonLuxe™

Mid rise straight waistband for comfort. Full length straight leg for freedom of movement.

**CP08**

ChSml, ChMed, ChLge, ChXlge

BLK

**AP08**

AdXsml, AdSml, AdMed, AdLge

BLK

**AP08**

AdXlge

BLK



**Brooklyn Track Pant**

Unbrushed Fleece

Straight leg for freedom of movement. Drawstring for comfort. Zip pockets for extra functionality.



**CAP3**

ChSml, ChMed, ChLge, ChXlge

BLK

**AAP3**

AdXsml, AdSml, AdMed, AdLge

BLK

**AAP3**

AdXlge

BLK



**Hayden Cargo**

Cotton/Elastane

Slimline shape for an on-trend look. Elastic waistband for comfort and the perfect fit.

**CAP43**

ChMed, ChLge, ChXlge

BLK

**AAP43**

AdXsml, AdSml, AdMed, AdLge

BLK

**AAP43**

AdXlge

BLK



**Logan Track Pant**

Polyester

Slim fit design is ultra-flattering. White contrast detailing at the waist and leg for a retro sports style.

**CAP44**

ChMed, ChLge, ChXlge

BLK

**MAP44**

AdXsml, AdSml, AdMed, AdLge

BLK

**MAP44**

AdXlge

BLK



**Avery Track Pant**

Unbrushed Fleece

Slimline design with rib cuffs for the perfect fit. Drawcord at the waist for sizing versatility.



**CAP45**

ChMed, ChLge, ChXlge

BLK GML

**MAP45**

AdSml, AdMed, AdLge

BLK GML

**MAP45**

AdXlge

BLK GML





**Jordan Track Pant**

Ultra Fleece

Unisex slimline design with cuffs for the perfect fit. Drawcord at the waist for sizing versatility.



**CAP13**

ChXsml, ChSml, ChMed, ChLge, ChXlge

BLK

**AAP13**

AdXsml, AdSml, AdMed, AdLge

BLK

**AAP13**

AdXlge

BLK



**Alex Track Pant**

Unbrushed Fleece

Slimline design with elastic at the ankle for the perfect fit. Drawcord at the waist for sizing versatility.

**CAP46**

ChMed, ChLge, ChXlge

BLK GML

**MAP46**

AdSml, AdMed, AdLge

BLK GML

**MAP46**

AdXlge

BLK GML



**Eden Track Pant**

ProForm™ Max/Aero Mesh

Flattering tapered unisex fit. Zip pockets for added functionality. Lightweight Aero Mesh detailing adds unique detail.



**CAP70**

ChSml, ChMed, ChLge, ChXlge

BLK

**AAP70**

AdXsml, AdSml, AdMed, AdLge

BLK

**AAP70**

AdXlge

BLK



**Maeve Cross Over**

ProForm™

Cross over front creates an elegant V neck line. Tie back for an adjustable fit.



**CX01**

ChXXsml, ChXsml, ChSml, ChMed, ChLge, ChXlge



\* ChXXsml available in BPK only.

**AX01**

AdXsml, AdSml, AdMed, AdLge



**AX01**

AdXlge



**Maeve Debut Cross Over**

ProForm Lite™

Cross over front creates an elegant V neck line. Tie back for an adjustable fit.



**DCX01**

ChXsml, ChSml, ChMed, ChLge, ChXlge, ChXXlge



**Lucinda Cross Over**

ProForm™

Mock cross over front creates an elegant V neck line. No tie so younger dancers can dress with ease.



**CX09**

ChXsml, ChSml, ChMed, ChLge, ChXlge



**Naomi Warm Up Top**

Acrylic

Scoop neck line is flattering and elegant. DANCE print on the torso to express your style.

**CW14**

ChSml/ChMed, ChLge/ChXlge



**AW14**

AdSml/AdMed, AdMed/AdLge



\* BLK not available in ChLge/ChXlge

## WARM UP

### Felicity Shrug

Australian Merino Wool

Arms and shoulders covered for a minimalist warm-up look. Long sleeves extend your lines and keep you warm pre-class.

#### MCW11

ChSml, ChMed,  
ChLge, ChXlge



#### MAW11

AdXsml/AdSml,  
AdMed/AdLge



### Vivian Cross Over

Australian Merino Wool

Mock cross over front creates an elegant V neck line. No tie for easy dressing.

#### MCW27

ChSml, ChMed,  
ChLge, ChXlge



#### MAW27

AdXsml/AdSml,  
AdMed/AdLge



### Ellen Top

Australian Merino Wool

Boat neck is elegant and flattering. Cropped style is on-trend and comfortable.

#### MCW28

ChSml, ChMed,  
ChLge, ChXlge



#### MAW28

AdXsml/AdSml,  
AdMed/AdLge



### Alisa Pullover

Australian Merino Wool

Boat neck is flattering and elegant. Long sleeves extend your lines and keep you warm pre-class.

#### MCW04

ChSml, ChMed,  
ChLge, ChXlge



#### MAW04

AdXsml/AdSml,  
AdMed/AdLge



**Montana Short**

Australian Merino Wool

Relaxed fit roll top waistband is ultra-comfortable. Loose fit around the legs for freedom of movement.

**MCAS2**

ChSml, ChMed, ChLge, ChXlge



**MAAS2**

AdXsml, AdSml, AdMed, AdLge



**Thalia Legging**

Australian Merino Wool

Relaxed fit roll top waistband is ultra-comfortable. Full length design helps muscles warm up evenly.

**MCWL08**

ChSml, ChMed, ChLge, ChXlge



**MAWL08**

AdXsml, AdSml, AdMed, AdLge



**Paisley Playsuit**

Australian Merino Wool

Relaxed fit for easy layering over your dancewear. Drawcord chest, waist and cuff for the perfect fit.

**MCW22**

ChSml, ChMed, ChLge, ChXlge



**MAW22**

AdXsml/AdSml, AdMed/AdLge



**Paisley Jumpsuit**

Australian Merino Wool

Relaxed fit for easy layering over your dancewear. Drawcord chest and waist for the perfect fit.

**MCW23**

ChSml, ChMed, ChLge, ChXlge



**MAW23**

AdXsml/AdSml, AdMed/AdLge



## WARM UP

### Tyla Onesie

Unbrushed Fleece

Relaxed fit for easy layering over your dancewear. Deep pockets and hood for added functionality.

#### CW30

ChSml, ChMed,  
ChLge, ChXlge

BLK

#### AW30

AdXsml, AdSml,  
AdMed, AdLge

BLK

#### AW30

AdXlge

BLK



### Cassidy Leg Warmer

Acrylic/Spandex

Super soft knit for extra comfort. No stirrup for versatility.

#### LW02

One Size

BLK

CDY



### Nina Ankle Warmer

Acrylic

Soft knit for extra comfort. Stirrup to hold in place.

#### CWL04

One Size

BPK

BLK

RED

#### AWL04

One Size

BBL

BPK

RED

WHT



### Carmen Leg Warmer

Acrylic/Nylon/Spandex

Soft ribbed knit for extra comfort. Stirrup to hold in place.

#### CWL06

One Size

BLK

BPK

LIL

#### AWL06

AdSml/AdMed,  
AdMed/AdLge

BLK

BPK

LIL



**Seamless G-String**

72% Microfibre/28% Spandex

High leg line and G-string cut to fit discreetly under your dancewear. Seamless construction for invisibility and comfort.

**CB04**

ChSml/ChMed  
ChLge/ChXlge

FLE

**AB04**

AdXsml/AdSml,  
AdMed/AdLge

FLE



**Male Support**

CottonLuxe™

Elastic waist for a comfortable fit. Padded construction for protection and support.

**CB08**

ChLge

BLK FLE

**AB08**

AdSml, AdMed,  
AdLge

BLK FLE

**AB08**

AdXlge

BLK FLE



**Seamless High Cut Brief**

72% Microfibre/28% Spandex

High cut leg line to fit under your leotard. Seamless construction for invisibility and comfort.

**CB10**

ChSml/ChMed  
ChMed/ChLge  
ChLge/ChXlge

FLE SPK TPK

**AB10**

AdXsml/AdSml  
AdSml/AdMed  
AdMed/AdLge  
AdLge/AdXlge

FLE SPK TPK



**Debut Seamless Brief**

90% Nylon/10% Spandex

High cut leg line to fit under your leotard. Seamless construction for invisibility and comfort.

**DCB05**

ChSml/ChMed  
ChMed/ChLge  
ChLge/ChXlge

FLE

**DAB05**

AdXsml/AdSml  
AdSml/AdMed  
AdMed/AdLge  
AdLge/AdXlge

FLE



**High Cut Brief**

ProForm™ Lite

High cut leg line for a discreet look under your dancewear. Cotton gusset for added breathability.

**CB03**

ChXXsml, ChXsml, ChSml, ChMed, ChLge, ChXlge



**AB03**

AdXsml, AdSml, AdMed, AdLge



**AB03**

AdXlge



**High Cut Brief**

CottonLuxe™

High cut leg line to fit under your leotard. Seamless construction for invisibility.

**CB03C**

ChXXsml, ChXsml, ChSml, ChMed, ChLge, ChXlge



**AB03C**

AdXsml, AdSml, AdMed, AdLge



**AB03C**

AdXlge



**Astrid Low Cut Brief**

ProForm™

A flattering high waist for support. Low cut leg line for modesty and comfort.

**CB131**

ChSml, ChMed, ChLge, ChXlge



**AB131**

AdXsml, AdSml, AdMed, AdLge



**Astrid High Cut Brief**

ProForm™

A flattering high waist for support. High cut leg line, perfect for wearing in an audition or onstage.

**CB132**

ChSml, ChMed, ChLge, ChXlge



**AB132**

AdXsml, AdSml, AdMed, AdLge



**Convertible Bra Top**

ProForm™ Lite

V neck line and underbust elastic for a discreet, comfortable fit. Clear, adjustable straps for invisibility.

**CB06**

ChMed, ChLge, ChXlge



**AB06**

AdXsml, AdSml, AdMed, AdLge



**Clear Back Bra**

ProForm™ Lite

Low, V neck line and underbust elastic for a discreet, comfortable fit. Clear, adjustable straps and a clear back for invisibility.

**CB09**

ChLge, ChXlge



**AB09**

AdXsml, AdSml, AdMed, AdLge



**Debut Seamless Bra**

90% Nylon/10% Spandex

Scooped V neck line and shaped bust for a discreet, comfortable fit. Adjustable straps provided in Clear and Flesh with a clear back.

**DCB01**

ChLge/ChXlge



**DAB01**

AdXsml/AdSml, AdMed/AdLge



**Costume Bra**

Nylon/Spandex

Supportive underwired cups for a comfortable fit. Clear, adjustable straps and a clear back for maximum invisibility.

**BRA01**

8, 10, 12, 14  
A, B, C, D, DD





# UNDERWEAR

## Dance Bra with Cups

ProForm™ Lite

Double fronted with removable cups for added support. V front and adjustable straps for the most comfortable fit.

### CB20

ChLge, ChXlge



### AB20

AdXsml, AdSml, AdMed, AdLge



## London Crop Top

ProForm™

Clean lines and fine straps make it perfect for layering under a leotard or singlet. Underbust elastic and double front for added support.

### CC69

ChSml, ChMed, ChLge, ChXlge



### AC69

AdXsml, AdSml, AdMed, AdLge



## Seamless Body Stocking

ProForm™ Lite

Seamless stitching for a comfortable, discreet fit. Low back for added versatility.

### CB16

ChXsml, ChSml, ChMed, ChLge, ChXlge



### AB16

AdXsml, AdSml, AdMed, AdLge



### AB16

AdXlge



## Seamless Body Stocking

CottonLuxe™

Seamless stitching for a comfortable, discreet fit. Low back for added versatility.

### CB16C

ChXsml, ChSml, ChMed, ChLge, ChXlge



### AB16C

AdXsml, AdSml, AdMed, AdLge



### AB16C

AdXlge



**Seamless Convertible Body Stocking**

ProForm™ Lite

Seamless stitching for a comfortable, discreet fit. Low back and adjustable multiway straps for added versatility.

**CB17**

ChXsml, ChSml, ChMed, ChLge, ChXlge



**AB17**

AdXsml, AdSml, AdMed, AdLge



**AB17**

AdXlge, AdXXlge



\* FLE and TAN supplied with clear straps. SKN supplied with SKN straps.



**Debut Seamless Body Stocking**

90% Nylon/10% Spandex

Seamless construction with low back for a comfortable, discreet fit. Adjustable straps provided in Flesh and Clear for added versatility.

**DCB02**

ChSml/ChMed, ChMed/ChLge, ChLge/ChXlge



**DAB02**

AdXsml/AdSml, AdMed/AdLge



**Body Stocking With Cups**

ProForm™ Lite

Double fronted upper with removable cups for added support. Low back and adjustable straps for added versatility.

**CB18**

ChLge, ChXlge



**AB18**

AdXsml, AdSml, AdMed, AdLge



**AB18**

AdXlge



\* FLE and TAN supplied with clear straps. SKN supplied with SKN straps.



**Freya Camisole**

ProForm™

Fine straps highlight the décolletage with freedom to move. No design lines for a clean, minimalist aesthetic.

**CL12**

ChXsml, ChSml, ChMed, ChLge, ChXlge



**AL12**

AdXsml, AdSml, AdMed, AdLge



## UNDERWEAR

---

### Lydia Short

ProForm™

Straight waistband is flattering and comfortable.  
Cut short at the leg for freedom of movement.

#### CT58

ChXsml, ChSml, ChMed,  
ChLge, ChXlge



#### AT58

AdXsml, AdSml,  
AdMed, AdLge



### Uni-Tight

Microfibre/Lycra™

Adjustable straps. Convertible foot for versatility.

#### CT32

ChLge/ChXlge



#### AT32

A/B, C/D



**Dance Anklet**

86% Microfibre/14% Spandex

• **CBS04**

ChSml (7-12)  
ChLge (13-3)  
Adult (2-10)



**Dance Sock**

86% Microfibre/14% Spandex

• **CBS05**

ChSml (7-12)  
ChLge (13-3)  
Adult (2-10)



**Capri Tight**

72% Microfibre/28% Spandex

- 3/4 Footless
- Matte Finish
- Cotton Gusset
- Flat Seams

**CT33 Child**

ChSml/ChMed,  
ChLge/ChXlge

**AT33 Adult**

A/B, C/D



**Soloist Dance Tight**

90% Microfibre/10% Lycra®

- Convertible
- Matte Finish
- No Gusset
- Flat Seams

**CT21 Child**

ChSml, ChMed,  
ChLge, ChXlge

**AT21 Adult**

A, B, C, D



**Classic Dance Tight**

72% Microfibre/28% Spandex

- Footed
- Matte Finish
- Cotton Gusset
- Flat Seams

**CT27 Child**

ChXsml, ChSml,  
ChMed, ChLge, ChXlge

**AT27 Adult**

A, B, C, D, E



**Classic Dance Tight**

72% Microfibre/28% Spandex

- Stirrup
- Matte Finish
- Cotton Gusset
- Flat Seams

**CT28 Child**

ChSml, ChMed,  
ChLge, ChXlge

**AT28 Adult**

A, B, C, D



**Classic Dance Tight**

72% Microfibre/28% Spandex

- Footless
- Matte Finish
- Cotton Gusset
- Flat Seams

**CT29 Child**

ChSml, ChMed,  
ChLge, ChXlge

**AT29 Adult**

A, B, C, D



**Classic Dance Tight**

72% Microfibre/28% Spandex

- Convertible
- Matte Finish
- Cotton Gusset
- Flat Seams

**CT30 Child**

ChSml, ChMed,  
ChLge, ChXlge

**AT30 Adult**

A, B, C, D, E



**Sheer Dance Pantyhose**

84% Nylon/16% Spandex

- Ultra Sheer Finis
- No gusset
- Footed
- Flat Seams

**CT37 Child**

ChXsml, ChSml, ChMed, ChLge, ChXlge

**AT37 Adult**

A, B, C, D, E



**Dance Pantyhose**

80% Microfibre/20% Spandex

- Sheer Matte Finish
- No Gusset
- Flat Seams

**CT36 Child**

ChSml, ChMed, ChLge, ChXlge

**AT36 Adult**

A, B, C, D



**Essential Dance Tight - Footed**

88% Nylon/12% Spandex

- Footed
- Matte Finish
- No Gusset
- Flat Seams

**CT02F Child**

ChXsml, ChSml, ChMed, ChLge, ChXlge

**AT02F Adult**

A, B, C, D



**Essential Dance Tight - Convertible**

88% Nylon/12% Spandex

- Convertible
- Matte Finish
- No Gusset
- Flat Seams

**CT02C Child**

ChXsml, ChSml, ChMed, ChLge, ChXlge

**AT02C Adult**

A, B, C, D



**Premier Footed Tight**

85% Nylon/15% Spandex

- Footed
- Matte Finish
- Gusset

**DCT38F**

ChXsml, ChSml, ChMed, ChLge, ChXlge



**Premier Convertible Tight**

85% Nylon/15% Spandex

- Convertible
- Matte Finish
- Gusset

**DCT38C**

ChXsml, ChSml, ChMed, ChLge, ChXlge

**DAT38C**

A, B, C, D



**Compression Tight**

68% Nylon/32% Spandex

- Matte Finish
- Cotton Gusset
- Flat Seams
- Compression to ensure ideal circulation for working muscles

**CT34 Child**

ChLge, ChXlge

**AT34 Adult**

A, B, C, D, E



**Compression Tight Convertible**

68% Nylon/32% Spandex

- Matte Finish
- Cotton Gusset
- Flat Seams
- Compression to ensure ideal circulation for working muscles

**CT35 Child**

ChLge, ChXlge

**AT35 Adult**

A, B, C, D, E



**Professional High Gloss Tight**

86% Nylon/14% Spandex

- Footed
- Cotton Gusset

**CT24 Child**

ChSml, ChMed, ChLge, ChXlge

**AT24 Adult**

A, B, C, D, E, F



SKN

**Professional High Gloss Tight**

86% Nylon/14% Spandex

- Stirrup
- Cotton Gusset

**CT25 Child**

ChSml, ChMed, ChLge, ChXlge

**AT25 Adult**

A, B, C, D



SKN

**Classic Fishnets**

85% Nylon/15% Spandex

- Footed
- No Gusset

**CT22 Child**

One size

**AT22 Adult**

A/B, C/D, E/F



BLK LIGHT TAN STN

\* E/F available in BLK only

**Professional Fishnets**

85% Nylon/15% Spandex

- Comfort Soles
- No Gusset
- Footed

**AT23 Adult**

A/B, C/D



BLK LIGHT TAN SKN STN

\* SKN available until sold out

### Clear Garment Bag

#### DB01

- Durable wipe-clean PU
- See all your costumes at a glance
- Pockets for accessories
- Zip closure

Size: 50cm (W) x 90cm (H)

CLR BLK



### Large Clear Garment Bag

#### DB02

- Durable wipe-clean PU
- See all your costumes at a glance
- Pockets for accessories
- Zip closure

Size: 50cm (W) x 125cm (H)

CLR



### The Comp Bag

#### DB03

- Durable wipe-clean fabric
- Folds down to satchel for travelling
- Pockets for accessories
- Zip closure

Size: 57cm (W) x 130cm (H)

BLK



### Casey Duffel

#### DB10

- Durable wipe-clean fabric
- Shoulder strap
- Carry handles
- Internal pockets
- Zip closure
- Perfect for personalised logo printing

Size: 47cm (L) x 20cm (H) x 26cm (D)

BLK



**Everleigh Bag**

**DB30**

- Durable wipe-clean fabric
- Removable strap
- Carry handles
- Internal pockets
- Dance Logo
- Zip closure

Size: 30cm (L)  
x 21cm (H)  
x 15cm (D)



**Tory Duffle**

**DB31**

- Durable wipe-clean fabric
- Removable strap
- Wet pocket
- Drink bottle pocket

Size: 50cm (L)  
x 24cm (H)  
x 24cm (D)



**Marley Bag**

**DB32**

- Durable wipe-clean fabric
- Large size, multiple compartment design
- Removable strap
- External and internal zip pockets

Size: 51 cm (L)  
x 26 cm (H)  
x 21 cm (D)



**Presley Duffle**

**DB33**

- Durable wipe-clean fabric
- Large size, multiple compartment design
- Removable strap
- External and internal zip pockets

Size: 54 cm (L)  
x 30 cm (H)  
x 25 cm (D)



\* Artwork gradually changing: logo moving to side



## Kendall Tote Bag

## DB34

- Durable wipe-clean fabric
- Carry handles
- Straps for half tutu, yoga mat or foam roller
- External zip pocket

Size: 39 cm (L)  
x 36 cm (H)  
x 19 cm (D)



## Girl Gang Duffel

## IDB35

- On trend print
- Durable wipe-clean fabric
- Removable strap
- Internal zip pocket

Size: 40 cm (L)  
x 29 cm (H)  
x 21.5cm (D)



\* Limited edition available until sold out

## Opal Glitter Bag

## GDB25

- Sparkling holographic panels
- Removable strap
- Carry handles
- Multiple compartments
- Zip closure

Size: 40 cm (L)  
x 29 cm (H)  
x 21.5cm (D)



## Everleigh Glitter Bag

## GDB30

- Sparkling holographic panels
- Removable strap
- Carry handles
- Internal pockets
- Zip closure

Size: 30cm (L)  
x 21cm (H)  
x 15cm (D)



**Jewel Glitter Bag**

**GDB36**

- Sparkling holographic panels
- Removable strap
- Carry handles
- Internal wet pocket
- Drink bottle pocket
- Zip closure

Size: 50cm (L)  
x 24cm (H)  
x 24cm (D)



**Spencer Drawstring Bag**

**PBE03**

- Lightweight construction
- Drawstring opening
- Perfect for shoes and accessories
- Logo print

Size: 30cm (L)  
x 36cm (H)



**Cotton Tote Bag**

**PBE09**

- Eco friendly
- Printed logo
- Min order 25 units

Small: 29cm (L)  
x 37cm (H)  
x 12.5cm (D)  
Handle: 64cm

Medium: 35cm (L)  
x 43cm (H)  
x 12.5cm (D)  
Handle: 64cm



**Eco Bag**

**PBE11 - Bianca  
PBE12 - Danah Jane**

- Eco friendly
- Photograph print
- Min order 25 units

Size: 44cm (L)  
x 40cm (H)  
x 13cm (D)



**Headband**

**H001**

- See website for full selection of colours.
- Order in units of 5.



**Scarf**

**H002**

- See website for full selection of colours.
- Order in units of 5.



**Scrunchie**

**H003 - ProForm™  
H003G - Shattered Glass**

**H003S - Showcase  
H003V - Velvet**

- See website for full selection of colours.
- Order in units of 5.



**Hair Bow**

**H005 - Satin  
H005V - Velvet**

- See website for full selection of colours.
- Attached to comb



**Satin Hair Bow with Tails**

**H005T**

- Attached to comb



**Velvet Hair Bow with Tails**

**H005VT**

- Attached to comb



**4.5cm Bobby Pins**



**H006**

- Pack of 25 or 50
- Order in units of 3



\*BLD not available in pack of 50

**6.4cm Bobby Pins**



**H007**

- Pack of 18
- Order in units of 3



**5cm Bun Pins**



**H009**

- Pack of 50
- Order in units of 3



**6.25cm Bun Pins**



**H010**

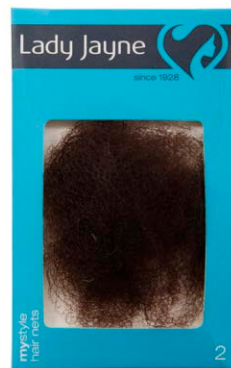
- Pack of 25
- Order in units of 3



**Hair Nets**

**H012**

- Pack of 2
- Order in units of 3



**Bun Nets**

**H013**

- Pack of 3
- Order in units of 3



**Slumber Nets**

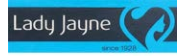
**H014**

- Pack of 3
- Order in units of 3

BRN



**Thin Snagless Ties**



**H015**

- Pack of 18
- Order in units of 3

BRN



**Thick Snagless Ties**



**H017**

- Pack of 10
- Order in units of 3

BRN



**Hair Blossom**

**H019**

- See website for full selection of colours
- Small, medium or large



**Satin Hair Clips**

**H022**



**Flower Head Piece**

**H023**

- Pastel or Dark



PASTEL

DARK

**Exam Pins**

**H024**



**Exam Pack**

**H025**



**Glitter Hair Bows**

**H026**

**H026F - Frosted**

- See website for full selection of colours



**Glitter Flower Hair Pins**

**H027**



**Rhinestone Hair Pins**

**H028**



**Bun Pack**

**H029**

- Bun styling essentials
- Small or Regular



**Hair Box Content**

**H030**  
• Hair styling essentials



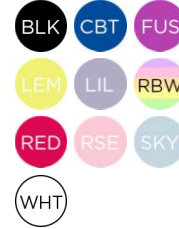
**Hair Box**

**H031**  
• Keep your hair styling essentials organised



**Flower Hair Pins**

**H032**



**Pearl Hair Pins**

**H044**



**Tiara**

**H050**  
• Duchess, Princess or Queen



**Danni Cap**

**H070**

- Strap-back closure for adjustable fit
- Curved brim for sun protection
- Eyelets for breathability and ventilation
- Constructed with cotton-canvas to hold its shape
- Perfect for adding a logo print



**Manicare Eyelashes**

- A001**
- Glue included
  - Jessica
  - Christina
  - Gwen
  - Miranda



**Manicare Eyelash Double Pack**

- A001D**
- Glue included
  - Jessica
  - Taylor



**Ardell Eyelash Glue**

**A002**



**Bra Cups - Padded**

- A012**
- ChLge/ChXlge
  - AdXsml/AdSml
  - AdMed/AdLge



**Bra Cups - Unpadded**

- A015**
- ChLge, ChXlge
  - AdXsml/AdSml
  - AdMed, AdLge



**Seamless Bra Straps**

- A008**
- One pair
  - Available in clear and skintone



**Thick Clear Back Bra Strap**

**A017**

- Spare back strap for AB09

CLR



**Compact Light Up Mirror**

**A018**

- Lights up like a dressing room mirror

BLK PNK

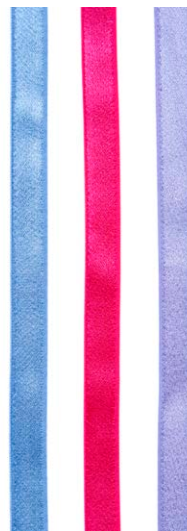


**RAD Belt Elastic**

**A004**

- Sold per metre

BBL BER BPK  
 BLK BUR CFL  
 DPK JAC LIL  
 LUN MUL NVY  
 WHT



**Dance Knee Pad**

**KP03**

- One pair
- Superior sweat absorbency
- XSML: 24-30cm
- SML: 28-34cm
- MED: 32-38cm
- LGE: 36-42cm

BLK FLE



**Turnboard**

**TB001**

BLU GLD PNK  
 PUR VIO



\* While stocks last

**Theraband**

**A009**

- Choose your resistance:
- Black: Maximum
- Blue: Extra Heavy
- Green: Heavy
- Red: Medium
- Yellow: Light

BLK BLU GRN  
 RED YEL



**Theraband Stretch Strap**

**A023**

- Improve flexibility, strength and range of motion

BLK



**Ribbon Stick**

**A010**

- Dance prop suitable for RAD

ASS DAR PAS



**Athlete Drink Bottle**

**G002**

- 800ml
- Australian made
- BPA free for safe drinking
- Lightweight
- Moulded hand hold
- Logo & slogan Print

CBT DPR RED



**Oxygen Drink Bottle**

**G007**

- 800ml
- Australian made
- BPA free for safe drinking
- Lightweight
- Moulded hand hold
- Logo print

BLK DPR EBL  
 MUL RED



**Souvenir Pointe Shoes**

**SPS01**

- 3 inches long
- A perfect gift

BLK BLU LIM  
 PNK RED WHT  
 YEL



**Dancer's Journal**

**G082**

- A perfect gift

PNK



### My First Pointe Shoes Booklet

#### G083

- A perfect gift/ keepsake
- Stickers included

PNK



### Calendar 2020

#### CALENDAR

- Inspirational images
- While stocks last



### Wholesale Catalogue 2020

Complete product list & pricelist



# SHOE ACCESSORIES

## Ballet Elastic

### S001

- 12mm width (ribbed)
- 15mm or 21mm width
- 50 metre rolls

PNK



## Ballet Elastic

### S001RT

- 15mm or 21mm width
- 1 metre pack

PNK



## Stretch Pointe Shoe Ribbon

### S003

- 22mm width
- 24 metre rolls

PNK



## Stretch Pointe Shoe Ribbon

### S003R

- 22mm width
- 2.5 metres

PNK



## Debut Ballet Ribbon

### S004

- 21mm width
- 50 metre rolls

PNK



## Flexi Ribbon

### S006

- Premium ballet ribbon with elastic insert for comfortable ankle support
- 15mm width available in PNK and TPK
- 21mm width available in TPK

PNK

TPK



## Premium Ballet Ribbon

### S013

- 15mm width available in PNK and TPK
- 21mm width available in TPK
- 60 metre rolls

PNK

TPK



## Premium Ballet Ribbon

### S013RT

- 15mm width available in PNK and TPK
- 21mm width available in TPK
- 2.5 metre packs

PNK

TPK



## Shirbrand Pointe Shoe Elastic

### S015

- 30mm width
- 1 metre

PNK



## Mesh Shoe Bag

### MSB01

- Breathable storage for dance shoes

BLK

PNK



## Pointe Shoe Bag

### PSB01

- Breathable storage for pointe shoes
- Zip pocket for accessories

BLK



## Lamb's Wool

### S020

- Australian wool
- Natural colour
- Order in units of 5

FLE





NEW

**Rock Rosin**

**S033**  
• 500g

CLR



**Mini Gel Toe Pads**

**S012**

CLR



**Pointe Paint**

**S028**

- Convenient, clean and easy way to dye pointe shoes
- Water-based pigments
- One bottle will paint 1-2 pairs of pointe shoes
- See website for colour selection



**Toe Support Pack**

- S023**
- Sml, Med or Lge
  - 2 X Spreaders
  - 2 X Separators
  - Made in the USA

CLR



**Toe Tube Half Gel**

- S024**
- Half Gel
  - 1 x 3" piece
  - Cut to size
  - Made in the USA
  - Medicated Gel
  - One size fits all

FLE



**Toe Tube Full Gel**

- S025**
- Full gel
  - 1 x 6" piece
  - Cut to size
  - Made in the USA
  - Medicated gel
  - One size fits all

FLE



**Tippy Toes**

- S026**
- Large size
  - 2 X gel toe tips
  - Made in the USA

FLE



**Suede Toe Caps**

**S022**

PNK



**Standard Pointe Pouch**

- S021**
- Cushions the ball of the foot & toes
  - Soft seams flatten en pointe
  - Medicated gel
  - Cut to size
  - Made in the USA

PNK



**Junior Pointe Pouch**

- S021**
- Crescent shaped pad
  - Thin layer of gel
  - Medicated gel
  - For wider feet
  - For those who only want the toes cushioned
  - Made in the USA

PNK



**Pro Pointe Pouch**

- S021**
- No gel under the ball of the foot
  - Thin layer of gel cushions the tops and tips of toes
  - Gel doesn't migrate
  - Medicated gel
  - Soft seams flatten en pointe
  - Made in the USA

PNK



**Tap Screws**

- S035TS - Toe**  
**S035HS - Heel**
- Packs of 6

SIL



# SHOE ACCESSORIES

## Ultra Flex Brush

S007

CLR



## Ultra Flex Paint

S008



## Colour Change

S009

- Order in units of 6



## Renovating Polish

S011

- Order in units of 6

CML



## Sprayon Colour Change

S016

- Order in units of 6

BPK

\* Cannot be air freighted



## Insoles

S010

- Childs 9-1
- Adults 2-7
- Full sizes only

WHT



## Shoe Laces

S029

- One pair

TAN



## Energetiks Insoles

S037

- Childs 7-13
- Adults 4-10
- Full sizes only

NEU



## Energetiks Half Insoles

S036

- ChSml 7-8
- ChMed 9-10
- ChLge 11-12
- ChXlge 13-1
- AdSml 5-6
- AdMed 7-8
- AdLge 9-10
- AdXlge 11-12
- Great for shallow feet

NEU

